

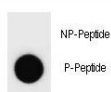
## Phospho-Cyclin B3 Antibody (pS283) (F40071)

Catalog No.	Formulation	Size
F40071-0.4ML	In 1X PBS, pH 7.4, with 0.09% sodium azide	0.4 ml
F40071-0.08ML	In 1X PBS, pH 7.4, with 0.09% sodium azide	0.08 ml

[Bulk quote request](#)

<b>Availability</b>	1-3 business days
<b>Species Reactivity</b>	Rat
<b>Format</b>	Antigen affinity purified
<b>Clonality</b>	Polyclonal (rabbit origin)
<b>Isotype</b>	Rabbit Ig
<b>Purity</b>	Antigen affinity
<b>UniProt</b>	F1LVT0
<b>Applications</b>	Dot Blot : 1:500
<b>Limitations</b>	This phospho-Cyclin B3 antibody is available for research use only.

Dot blot analysis of phospho-Cyclin B3 antibody . 50ng of phos-peptide or nonphos-peptide per dot were spotted.



## Description

Cyclins are positive regulatory subunits of the cyclin-dependent kinases (CDKs), and thereby play an essential role in the control of the cell cycle, notably via their destruction during cell division. Its tissue specificity suggest that it may be required during early meiotic prophase I (By similarity). [UniProt]

## Application Notes

Titration of the phospho-Cyclin B3 antibody may be required due to differences in protocols and secondary/substrate sensitivity.

## Immunogen

This phospho-Cyclin B3 antibody was produced from rabbits immunized with a KLH conjugated synthetic phosphopeptide corresponding to amino acid residues surrounding pS283 of rat CCNB3.

## Storage

Aliquot the phospho-Cyclin B3 antibody and store frozen at -20oC or colder. Avoid repeated freeze-thaw cycles.