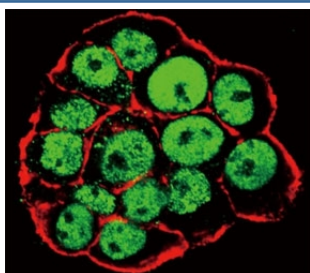


Phospho-CDX2 Antibody (pS283) (F48622)

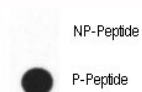
| Catalog No. | Formulation | Size |
|---------------|--|---------|
| F48622-0.4ML | In 1X PBS, pH 7.4, with 0.09% sodium azide | 0.4 ml |
| F48622-0.08ML | In 1X PBS, pH 7.4, with 0.09% sodium azide | 0.08 ml |

Bulk quote request

| | |
|---------------------------|--|
| Availability | 1-3 business days |
| Species Reactivity | Human |
| Format | Antigen affinity purified |
| Clonality | Polyclonal (rabbit origin) |
| Isotype | Rabbit Ig |
| Purity | Antigen affinity |
| UniProt | Q99626 |
| Applications | Immunofluorescence : 1:10-1:50 Dot Blot : 1:500 |
| Limitations | This phospho-CDX2 antibody is available for research use only. |



Confocal immunofluorescent analysis of phospho CDX2 antibody and WiDr cells followed by Alexa Fluor 488-conjugated goat anti-rabbit IgG (green). Actin filaments have been labeled with Alexa Fluor 555 Phalloidin (red).



Dot blot analysis of phospho-CDX2 antibody. 50ng of phos-peptide or nonphos-peptide per dot were spotted.

Description

CDX2 is involved in the transcriptional regulation of multiple genes expressed in the intestinal epithelium. Important in broad range of functions from early differentiation to maintenance of the intestinal epithelial lining of both the small and large intestine. [UniProt]

Application Notes

Titration of the phospho-CDX2 antibody may be required due to differences in protocols and secondary/substrate sensitivity.

Immunogen

This phospho-CDX2 antibody was produced from rabbits immunized with a KLH conjugated synthetic phosphopeptide corresponding to amino acid residues surrounding pS283 of human CDX2.

Storage

Aliquot the phospho-CDX2 antibody and store frozen at -20oC or colder. Avoid repeated freeze-thaw cycles.