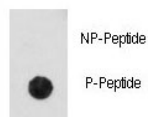


Phospho-CDK2 Antibody (pT14) (F48592)

Catalog No.	Formulation	Size
F48592-0.4ML	In 1X PBS, pH 7.4, with 0.09% sodium azide	0.4 ml
F48592-0.08ML	In 1X PBS, pH 7.4, with 0.09% sodium azide	0.08 ml

[Bulk quote request](#)

Availability	1-3 business days
Species Reactivity	Human
Predicted Reactivity	Bovine, Hamster, Mouse, Rat, Xenopus
Format	Antigen affinity purified
Clonality	Polyclonal (rabbit origin)
Isotype	Rabbit Ig
Purity	Antigen affinity
UniProt	P24941
Applications	Dot Blot : 1:500
Limitations	This phospho-CDK2 antibody is available for research use only.



Dot blot analysis of phospho-CDK2 antibody. 50ng of phos-peptide or nonphos-peptide per dot were spotted.

Description

CDK2 is a member of the Ser/Thr protein kinase family. This protein kinase is highly similar to the gene products of *S. cerevisiae* cdc28, and *S. pombe* cdc2. It is a catalytic subunit of the cyclin-dependent protein kinase complex, whose activity is restricted to the G1-S phase, and essential for cell cycle G1/S phase transition. This protein associates with and regulated by the regulatory subunits of the complex including cyclin A or E, CDK inhibitor p21Cip1 (CDKN1A) and p27Kip1 (CDKN1B). Its activity is also regulated by its protein phosphorylation.

Application Notes

Titration of the phospho-CDK2 antibody may be required due to differences in protocols and secondary/substrate sensitivity.

Immunogen

This phospho-CDK2 antibody was produced from rabbits immunized with a KLH conjugated synthetic phosphopeptide corresponding to amino acid residues surrounding pT14 of human CDK2.

Storage

Aliquot the phospho-CDK2 antibody and store frozen at -20oC or colder. Avoid repeated freeze-thaw cycles.