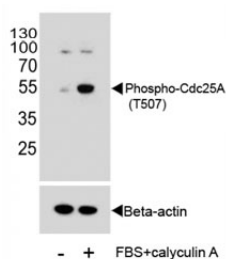


## Phospho-CDC25A Antibody (pT507) (F48379)

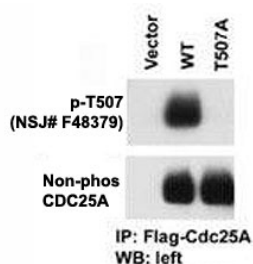
Catalog No.	Formulation	Size
F48379-0.4ML	In 1X PBS, pH 7.4, with 0.09% sodium azide	0.4 ml
F48379-0.08ML	In 1X PBS, pH 7.4, with 0.09% sodium azide	0.08 ml

[Bulk quote request](#)

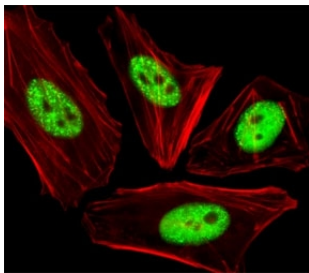
<b>Availability</b>	1-3 business days
<b>Species Reactivity</b>	Human
<b>Predicted Reactivity</b>	Bovine, Mouse, Rat
<b>Format</b>	Antigen affinity purified
<b>Clonality</b>	Polyclonal (rabbit origin)
<b>Isotype</b>	Rabbit Ig
<b>Purity</b>	Antigen affinity
<b>UniProt</b>	P30304
<b>Applications</b>	Immunofluorescence : 1:25 Western Blot : 1:250-1000 IHC (Paraffin) : 1:50-1:100
<b>Limitations</b>	This phospho-CDC25A antibody is available for research use only.



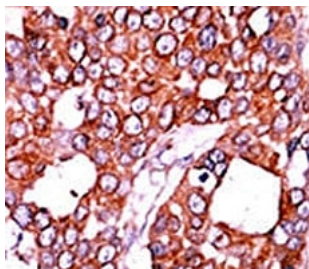
Western blot analysis of extracts from HeLa cells, untreated or treated with Calyculin A, using phospho-Cdc25A antibody. Predicted molecular weight: 59-70 kDa.



The phospho-CDC25A antibody used in western blot with cells transfected with wild type or mutant T507 A of CDC25A. Data courtesy of Dr. Tiebang Kang of Washington University, St. Louis, MO.



Fluorescent image of HeLa cells stained with phospho-CDC25A antibody at 1:25 dilution. An Alexa Fluor 488-conjugated goat anti-rabbit IgG was used as the secondary Ab (green). Cytoplasmic actin was counterstained with Alexa Fluor 555 conjugated with Phalloidin (red).



IHC analysis of FFPE human breast carcinoma tissue stained with the CDC25A antibody.

## Description

CDC25A is a member of the CDC25 family of phosphatases. CDC25A is required for progression from G1 to the S phase of the cell cycle. It activates the cyclin-dependent kinase CDC2 by removing two phosphate groups. CDC25A is specifically degraded in response to DNA damage, which prevents cells with chromosomal abnormalities from progressing through cell division. CDC25A is an oncogene, although its exact role in oncogenesis has not been demonstrated. Two transcript variants encoding different isoforms have been found for this gene.

## Application Notes

Titration of the phospho-CDC25A antibody may be required due to differences in protocols and secondary/substrate sensitivity.

## Immunogen

This phospho-CDC25A antibody was produced from rabbits immunized with a KLH conjugated synthetic phosphopeptide corresponding to amino acid residues surrounding pT507 of human CDC25A.

## Storage

Aliquot the phospho-CDC25A antibody and store frozen at -20oC or colder. Avoid repeated freeze-thaw cycles.