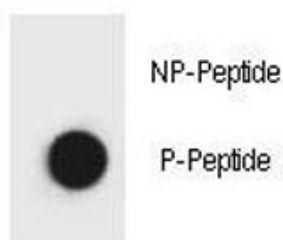


Phospho-Beclin-1 Antibody (pT119) (F48656)

Catalog No.	Formulation	Size
F48656-0.4ML	In 1X PBS, pH 7.4, with 0.09% sodium azide	0.4 ml
F48656-0.08ML	In 1X PBS, pH 7.4, with 0.09% sodium azide	0.08 ml

[Bulk quote request](#)

Availability	1-3 business days
Species Reactivity	Human
Predicted Reactivity	Mouse, Rat, Bovine, Pig, Chicken, Xenopus
Format	Antigen affinity purified
Clonality	Polyclonal (rabbit origin)
Isotype	Rabbit Ig
Purity	Antigen affinity
UniProt	Q14457
Applications	Dot Blot : 1:500
Limitations	This phospho-Beclin-1 antibody is available for research use only.



Dot blot analysis of phospho Beclin-1 antibody. 50ng of phos-peptide or nonphos-peptide per dot were spotted.

Description

Beclin-1 participates in the regulation of autophagy and has an important role in development, tumorigenesis, and neurodegeneration.

Application Notes

Titration of the phospho-Beclin-1 antibody may be required due to differences in protocols and secondary/substrate sensitivity.

Immunogen

This phospho-Beclin-1 antibody was raised against an amino acid sequence surrounding pT119 of the human protein.

Storage

Aliquot the phospho-Beclin-1 antibody and store frozen at -20oC or colder. Avoid repeated freeze-thaw cycles.