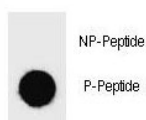


## Phospho-BAD Antibody (pS25) (F48667)

Catalog No.	Formulation	Size
F48667-0.4ML	In 1X PBS, pH 7.4, with 0.09% sodium azide	0.4 ml
F48667-0.08ML	In 1X PBS, pH 7.4, with 0.09% sodium azide	0.08 ml

[Bulk quote request](#)

<b>Availability</b>	1-3 business days
<b>Species Reactivity</b>	Human
<b>Format</b>	Antigen affinity purified
<b>Clonality</b>	Polyclonal (rabbit origin)
<b>Isotype</b>	Rabbit Ig
<b>Purity</b>	Antigen affinity
<b>UniProt</b>	Q92934
<b>Applications</b>	Dot Blot : 1:500
<b>Limitations</b>	This phospho-BAD antibody is available for research use only.



Dot blot analysis of phospho-BAD antibody. 50ng of phos-peptide or nonphos-peptide per dot were spotted.

## Description

The protein encoded by this gene is a member of the BCL-2 family. BCL-2 family members are known to be regulators of programmed cell death. This protein positively regulates cell apoptosis by forming heterodimers with BCL-xL and BCL-2, and reversing their death repressor activity. Proapoptotic activity of this protein is regulated through its phosphorylation. Protein kinases AKT and MAP kinase, as well as protein phosphatase calcineurin were found to be involved in the regulation of this protein. Alternative splicing of this gene results in two transcript variants which encode the same isoform. [provided by RefSeq].

## Application Notes

Titration of the phospho-BAD antibody may be required due to differences in protocols and secondary/substrate sensitivity.

### **Immunogen**

This phospho-BAD antibody was produced from rabbits immunized with a KLH conjugated synthetic phosphopeptide corresponding to amino acid residues surrounding pS25 of human BAD.

### **Storage**

Aliquot the phospho-BAD antibody and store frozen at -20oC or colder. Avoid repeated freeze-thaw cycles.