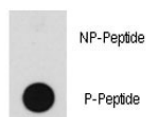


## Phospho-B-RAF Antibody (pT598) (F48507)

| Catalog No.   | Formulation                                | Size    |
|---------------|--|---------|
| F48507-0.4ML  | In 1X PBS, pH 7.4, with 0.09% sodium azide | 0.4 ml  |
| F48507-0.08ML | In 1X PBS, pH 7.4, with 0.09% sodium azide | 0.08 ml |

[Bulk quote request](#)

|                             |   |
|-----------------------------|---|
| <b>Availability</b>         | 1-3 business days   |
| <b>Species Reactivity</b>   | Human   |
| <b>Predicted Reactivity</b> | Mouse, Rat, Bovine, Chicken                                     |
| <b>Format</b>               | Antigen affinity purified                                       |
| <b>Clonality</b>            | Polyclonal (rabbit origin)                                      |
| <b>Isotype</b>              | Rabbit Ig   |
| <b>Purity</b>               | Antigen affinity  |
| <b>UniProt</b>              | P15056  |
| <b>Applications</b>         | Dot Blot : 1:500  |
| <b>Limitations</b>          | This phospho-B-RAF antibody is available for research use only. |



Dot blot analysis of phospho-B-RAF antibody. 50ng of phos-peptide or nonphos-peptide per dot were spotted.

## Description

BRAF is involved in the transduction of mitogenic signals from the cell membrane to the nucleus. It may play a role in the postsynaptic responses of hippocampal neuron. Defects in BRAF are a cause of cardiofaciocutaneous syndrome (CFC syndrome), and a wide range of cancers such as lung cancer, non-Hodgkins lymphoma, and colorectal cancer.

## Application Notes

Titration of the phospho-B-RAF antibody may be required due to differences in protocols and secondary/substrate sensitivity.

## Immunogen

This phospho-B-RAF antibody was produced from rabbits immunized with a KLH conjugated synthetic phosphopeptide corresponding to amino acid residues surrounding pT598 of human BRAF.

## Storage

Aliquot the phospho-B-RAF antibody and store frozen at -20oC or colder. Avoid repeated freeze-thaw cycles.