

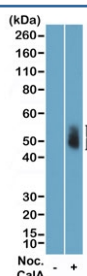
Phospho-Aurora A/B/C Antibody (pThr288/pThr232/pThr198) [clone RM454] (R20468)

Catalog No.	Formulation	Size
R20468-0.1ML	Antibody in PBS with 50% glycerol, 1% BSA and 0.09% sodium azide	100 ul

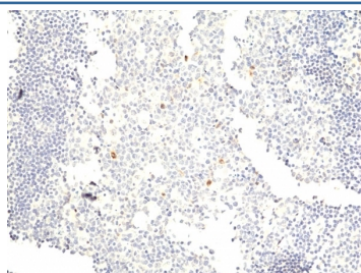
Recombinant RABBIT MONOCLONAL

[Bulk quote request](#)

Availability	1-3 business days
Species Reactivity	Human
Format	Purified
Clonality	Recombinant Rabbit Monoclonal
Isotype	Rabbit IgG
Clone Name	RM454
Purity	Protein A purified from animal origin-free supernatant
UniProt	Q9UQB9, Q96GD4, O14965
Applications	Western Blot : 1:1000-1:3000 Immunohistochemistry (FFPE) : 1:25-1:50
Limitations	This recombinant phospho-Aurora A/B/C antibody is available for research use only.



Western blot testing of lysate of human HeLa cells, non-treated (-) or treated (+) with Nocodazole and Calyculin A, using recombinant phospho-Aurora A/B/C antibody at a 1:2500 dilution.



IHC staining of FFPE human tonsil tissue with recombinant phospho-Aurora A/B/C antibody at 1:50.

Description

This antibody reacts to human Aurora A/B/C only when phosphorylated at either Thr288, Thr232 or Thr198 respectively. There is no cross-reactivity to Aurora A/B/C that is not phosphorylated at these positions.

Application Notes

The stated application concentrations are suggested starting points. Titration of the recombinant phospho-Aurora A/B/C antibody may be required due to differences in protocols and secondary/substrate sensitivity.

Immunogen

A phospho-peptide corresponding to Phospho-Aurora A (Thr288)/Aurora B (Thr232)/Aurora C (Thr198) was used as the immunogen for the phospho-Aurora A/B/C antibody.

Storage

Store the recombinant phospho-Aurora A/B/C antibody at -20oC.