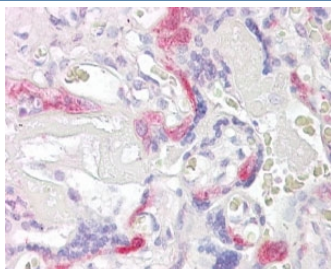


PHLDA2 Antibody / Pleckstrin homology-like domain, family A, member 2 (R33928)

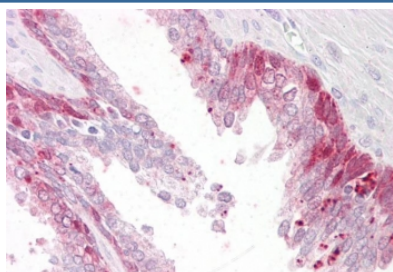
Catalog No.	Formulation	Size
R33928-100UG	0.5 mg/ml in 1X TBS, pH7.3, with 0.5% BSA (US sourced) and 0.02% sodium azide	100 ug

[Bulk quote request](#)

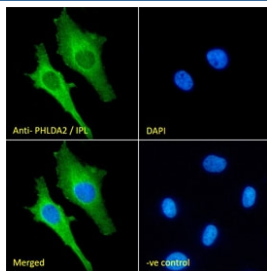
Availability	1-3 business days
Species Reactivity	Human
Format	Antigen affinity purified
Clonality	Polyclonal (goat origin)
Isotype	Goat Ig
Purity	Antigen affinity
Gene ID	7262
Applications	Immunohistochemistry (FFPE) : 3-6ug/ml Western Blot : 2-3ug/ml Immunofluorescence : 10ug/ml Flow Cytometry : 10ug/ml ELISA (peptide) LOD : 1:32000
Limitations	This PHLDA2 antibody is available for research use only.



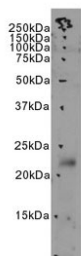
IHC testing of FFPE human placental tissue with PHLDA2 antibody at 4ug/ml. HIER: steamed with pH6 citrate buffer, AP-staining.



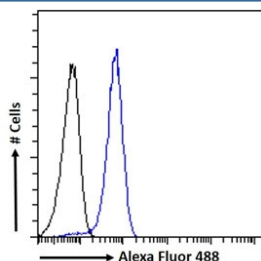
IHC testing of FFPE human prostate tissue with PHLDA2 antibody at 4ug/ml. HIER: steamed with pH6 citrate buffer, AP-staining.



IF/ICC staining of fixed and permeabilized human HeLa cells with PHLDA2 antibody (green) at 10ug/ml and DAPI nuclear stain (blue).



Western blot testing of human MDA-MB-231 cell lysate with PHLDA2 antibody. Predicted molecular weight ~17 kDa.



FACS testing of fixed and permeabilized human MCF7 cells with PHLDA2 antibody (blue) at 10ug/ml and naive goat Ig (black).

Description

Additional name(s) for this target protein: Pleckstrin homology-like domain family A member 2; TSSC3; IPL; BRW1C; BWR1C; HLDA2

Application Notes

Optimal dilution of the PHLDA2 antibody should be determined by the researcher.

Immunogen

Amino acids EPSRPSPQPKRTP were used as the immunogen for this PHLDA2 antibody.

Storage

Aliquot and store the PHLDA2 antibody at -20oC.