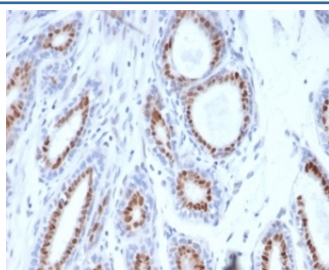


## PGR Antibody / Progesterone Receptor [clone PGR/3817] (V9411)

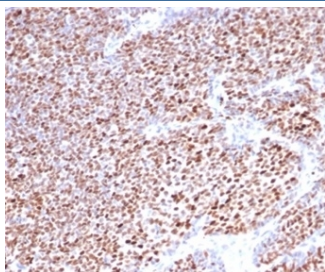
Catalog No.	Formulation	Size
V9411-100UG	0.2 mg/ml in 1X PBS with 0.1 mg/ml BSA (US sourced), 0.05% sodium azide	100 ug
V9411-20UG	0.2 mg/ml in 1X PBS with 0.1 mg/ml BSA (US sourced), 0.05% sodium azide	20 ug
V9411SAF-100UG	1 mg/ml in 1X PBS; BSA free, sodium azide free	100 ug

[Bulk quote request](#)

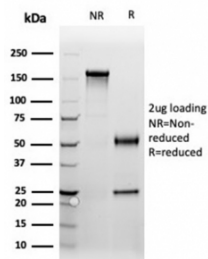
<b>Availability</b>	1-3 business days
<b>Species Reactivity</b>	Human
<b>Format</b>	Purified
<b>Clonality</b>	Monoclonal (mouse origin)
<b>Isotype</b>	Mouse IgG2b, kappa
<b>Clone Name</b>	PGR/3817
<b>Purity</b>	Protein A/G affinity
<b>UniProt</b>	P06401
<b>Localization</b>	Nucleus
<b>Applications</b>	Immunohistochemistry (FFPE) : 1-2ug/ml
<b>Limitations</b>	This PGR antibody is available for research use only.



IHC staining of FFPE human breast carcinoma tissue with PGR antibody (clone PGR/3817). HIER: boil tissue sections in pH 9 10mM Tris with 1mM EDTA for 20 min and allow to cool before testing.



IHC staining of FFPE human breast carcinoma tissue with PGR antibody (clone PGR/3817). HIER: boil tissue sections in pH 9 10mM Tris with 1mM EDTA for 20 min and allow to cool before testing.



SDS-PAGE analysis of purified, BSA-free PGR antibody (clone PGR/3817) as confirmation of integrity and purity.

## Description

This MAbs is specific to PR/PGR and shows minimal cross-reaction with other members of the family. PR is expressed as two major isoforms, PR-A (81kDa) and PR-B (116kDa). Expression of PgR has been suggested to reflect an intact estrogen regulatory machinery and therefore, predict better clinical response to endocrine therapy than ER alone. It is excellent for immunohistochemical staining of formalin/paraffin tissues.

## Application Notes

Optimal dilution of the PGR antibody should be determined by the researcher.

## Immunogen

A portion of amino acids 483-571 was used as the immunogen for the PGR antibody.

## Storage

Aliquot the PGR antibody and store frozen at -20oC or colder. Avoid repeated freeze-thaw cycles.