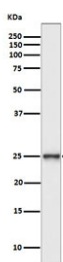


PGP9.5 Antibody / Uchl1 [clone AOCE-21] (RQ5295)

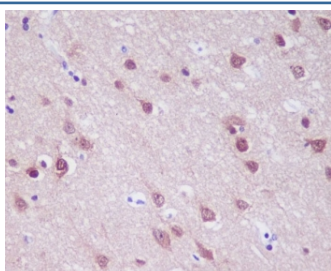
Catalog No.	Formulation	Size
RQ5295	Antibody in PBS with 0.02% sodium azide, 50% glycerol and 0.4-0.5mg/ml BSA	100 ul

[Bulk quote request](#)

Availability	1-2 weeks
Species Reactivity	Human
Format	Purified
Clonality	Rabbit Monoclonal
Isotype	Rabbit IgG
Clone Name	AOCE-21
Purity	Affinity purified
UniProt	P09936
Applications	Western Blot : 1:500-1:2000 Immunohistochemistry (FFPE) : 1:50-1:200
Limitations	This PGP9.5 antibody is available for research use only.



Western blot testing of human SH-SY5Y cell lysate with PGP9.5 antibody. Predicted molecular weight ~25 kDa.



IHC staining of FFPE human brain tissue with PGP9.5 antibody. HIER: boil tissue sections in pH6 citrate buffer for 20 min and allow to cool before testing.

Description

The protein encoded by the UCHL1 gene belongs to the peptidase C12 family. This enzyme is a thiol protease that hydrolyzes a peptide bond at the C-terminal glycine of ubiquitin. This gene is specifically expressed in the neurons and in cells of the diffuse neuroendocrine system. Mutations in this gene may be associated with Parkinson disease.

Application Notes

Optimal dilution of the PGP9.5 antibody should be determined by the researcher.

Immunogen

A synthetic peptide specific to human PGP9.5 / UCHL1 was used as the immunogen for the PGP9.5 antibody.

Storage

Store the PGP9.5 antibody at -20oC.