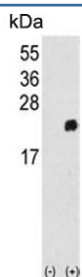


## Peroxiredoxin 1 Antibody / PRDX1 (F54796)

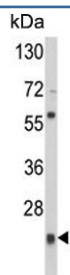
Catalog No.	Formulation	Size
F54796-0.4ML	In 1X PBS, pH 7.4, with 0.09% sodium azide	0.4 ml
F54796-0.08ML	In 1X PBS, pH 7.4, with 0.09% sodium azide	0.08 ml

[Bulk quote request](#)

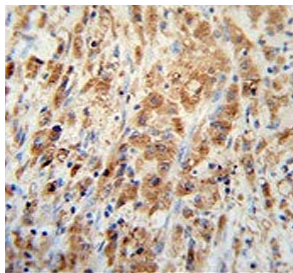
<b>Availability</b>	1-3 business days
<b>Species Reactivity</b>	Human
<b>Format</b>	Purified
<b>Clonality</b>	Polyclonal (rabbit origin)
<b>Isotype</b>	Rabbit Ig
<b>Purity</b>	Purified
<b>UniProt</b>	Q06830
<b>Localization</b>	Cytoplasmic
<b>Applications</b>	Immunohistochemistry (FFPE) : 1:50-1:100 Flow Cytometry : 1:10-1:50 (1x10e6 cells) Western Blot : 1:500-1:1000
<b>Limitations</b>	This Peroxiredoxin 1 antibody is available for research use only.



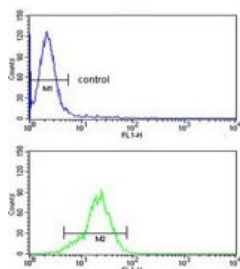
Western blot testing of 1) non-transfected and 2) transfected 293 cell lysate with Peroxiredoxin 1 antibody.



Western blot testing of human CCRF-CEM cell lysate with Peroxiredoxin 1 antibody. Predicted molecular weight ~22 kDa.



IHC testing of FFPE human colon carcinoma tissue with Peroxiredoxin 1 antibody. HIER: steam section in pH6 citrate buffer for 20 min and allow to cool prior to staining.



Flow cytometry testing of human HEK293 cells with Peroxiredoxin 1 antibody; Blue=isotype control, Green= Peroxiredoxin 1 antibody.

## Description

PRDX1 is a member of the peroxiredoxin family of antioxidant enzymes, which reduce hydrogen peroxide and alkyl hydroperoxides. This protein may play an antioxidant protective role in cells, and may contribute to the antiviral activity of CD8(+) T-cells. This protein may have a proliferative effect and play a role in cancer development or progression.

## Application Notes

The stated application concentrations are suggested starting points. Titration of the Peroxiredoxin 1 antibody may be required due to differences in protocols and secondary/substrate sensitivity.

## Immunogen

A portion of amino acids 88-116 from the human protein was used as the immunogen for the Peroxiredoxin 1 antibody.

## Storage

Aliquot the Peroxiredoxin 1 antibody and store frozen at -20oC or colder. Avoid repeated freeze-thaw cycles.