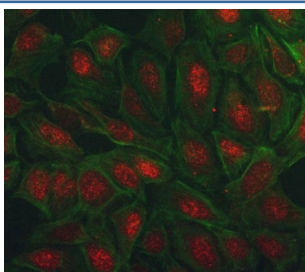


## PEG3 Antibody / Paternally-expressed gene 3 (RQ8704)

Catalog No.	Formulation	Size
RQ8704	0.5mg/ml if reconstituted with 0.2ml sterile DI water	100 ug

**Bulk quote request**

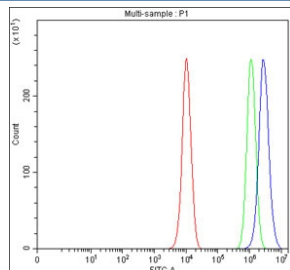
<b>Availability</b>	1-3 days
<b>Species Reactivity</b>	Human
<b>Format</b>	Antigen affinity purified
<b>Clonality</b>	Polyclonal (rabbit origin)
<b>Isotype</b>	Rabbit IgG
<b>Purity</b>	Antigen affinity chromatography
<b>Buffer</b>	Lyophilized from 1X PBS with 2% Trehalose
<b>UniProt</b>	Q9GZU2
<b>Localization</b>	Nuclear, cytoplasmic
<b>Applications</b>	Western Blot : 1-2ug/ml Immunofluorescence : 5ug/ml Flow Cytometry : 1-3ug/million cells ELISA : 0.1-0.5ug/ml
<b>Limitations</b>	This PEG3 antibody is available for research use only.



Immunofluorescent staining of FFPE human U-2 OS cells with PEG3 antibody (red) and Phalloidin-iFluor 488 conjugate (green). HIER: steam section in pH6 citrate buffer for 20 min.



Western blot testing of human HepG2 cell lysate with PEG3 antibody. Predicted molecular weight ~180 kDa.



Flow cytometry testing of fixed and permeabilized human PC-3 cells with PEG3 antibody at 1ug/million cells (blocked with goat sera); Red=cells alone, Green=isotype control, Blue= PEG3 antibody.

## Description

Paternally-expressed gene 3 protein is a protein that in humans is encoded by the PEG3 gene. In human, ZIM2 and PEG3 are treated as two distinct genes though they share multiple 5' exons and a common promoter and both genes are paternally expressed. Alternative splicing events connect their shared 5' exons either with the remaining 4 exons unique to ZIM2, or with the remaining 2 exons unique to PEG3. In contrast, in other mammals ZIM2 does not undergo imprinting and, in mouse, cow, and likely other mammals as well, the ZIM2 and PEG3 genes do not share exons. Human PEG3 protein belongs to the Kruppel C2H2-type zinc finger protein family. PEG3 may play a role in cell proliferation and p53-mediated apoptosis. PEG3 has also shown tumor suppressor activity and tumorigenesis in glioma and ovarian cells. Alternative splicing of this PEG3 gene results in multiple transcript variants encoding distinct isoforms.

## Application Notes

Optimal dilution of the PEG3 antibody should be determined by the researcher.

## Immunogen

An E.coli-derived human recombinant protein (amino acids M1-R1548) was used as the immunogen for the PEG3 antibody.

## Storage

After reconstitution, the PEG3 Antibody can be stored for up to one month at 4oC. For long-term, aliquot and store at -20oC. Avoid repeated freezing and thawing.