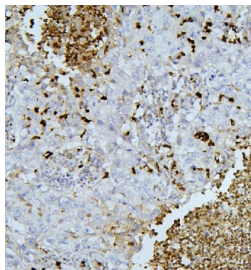


PEF1 Antibody / Peflin (RQ5373)

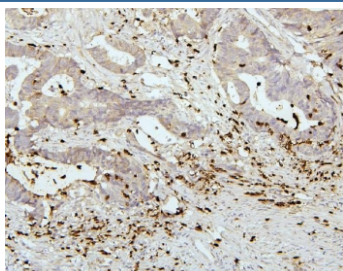
Catalog No.	Formulation	Size
RQ5373	0.5mg/ml if reconstituted with 0.2ml sterile DI water	100 ug

Bulk quote request

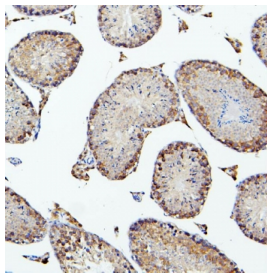
Availability	1-3 business days
Species Reactivity	Human, Mouse, Rat
Format	Antigen affinity purified
Clonality	Polyclonal (rabbit origin)
Isotype	Rabbit IgG
Purity	Affinity purified
Buffer	Lyophilized from 1X PBS with 2% Trehalose and 0.025% sodium azide
UniProt	Q9UBV8
Localization	Cytoplasm, Nucleus
Applications	Western Blot : 0.5-1ug/ml Immunohistochemistry (FFPE) : 2-5ug/ml Direct ELISA : 0.1-0.5ug/ml
Limitations	This PEF1 antibody is available for research use only.



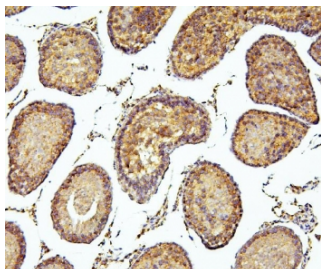
IHC staining of FFPE human lung cancer tissue with PEF1 antibody. HIER: boil tissue sections in pH8 EDTA for 20 min and allow to cool before testing.



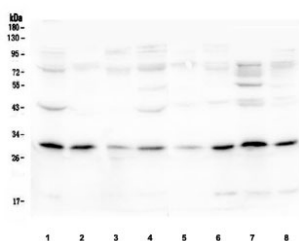
IHC staining of FFPE human colon cancer tissue with PEF1 antibody. HIER: boil tissue sections in pH8 EDTA for 20 min and allow to cool before testing.



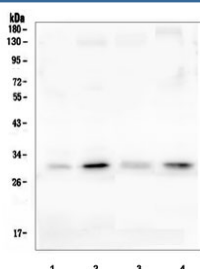
IHC staining of FFPE mouse testis tissue with PEF1 antibody. HIER: boil tissue sections in pH8 EDTA for 20 min and allow to cool before testing.



IHC staining of FFPE rat testis tissue with PEF1 antibody. HIER: boil tissue sections in pH8 EDTA for 20 min and allow to cool before testing.



Western blot testing of human 1) 293T, 2) placenta, 3) PC-3, 4) U-87 MG, 5) U-937, 6) HepG2, 7) A431 and 8) U-2 OS cell lysate with PEF1 antibody. Predicted molecular weight ~30 kDa.



Western blot testing of 1) rat lung, 2) rat testis, 3) mouse lung and 4) mouse testis tissue lysate with PEF1 antibody. Predicted molecular weight ~30 kDa.

Description

Peflin is a protein that in humans is encoded by the PEF1 gene. This gene encodes a calcium-binding protein belonging to the penta-EF-hand protein family. The encoded protein has been shown to form a heterodimer with the programmed cell death 6 gene product and may modulate its function in Ca^{2+} signaling. Alternative splicing results in multiple transcript variants and a pseudogene has been identified on chromosome 1.

Application Notes

Optimal dilution of the PEF1 antibody should be determined by the researcher.

Immunogen

Amino acids R170-L284 from the human protein were used as the immunogen for the PEF1 antibody.

Storage

Store the PEF1 antibody at -20°C .

