

## PECAM-1 Antibody / CD31 [clone 158-2B3] (V2783)

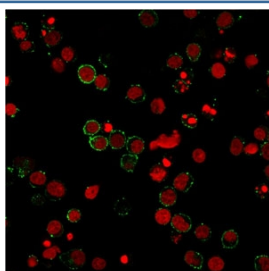
Catalog No.	Formulation	Size
V2783-100UG	0.2 mg/ml in 1X PBS with 0.1 mg/ml BSA (US sourced) and 0.05% sodium azide	100 ug
V2783-20UG	0.2 mg/ml in 1X PBS with 0.1 mg/ml BSA (US sourced) and 0.05% sodium azide	20 ug
V2783SAF-100UG	1 mg/ml in 1X PBS; BSA free, sodium azide free	100 ug



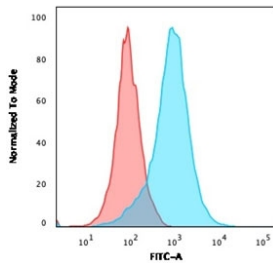
Citations (6)

[Bulk quote request](#)

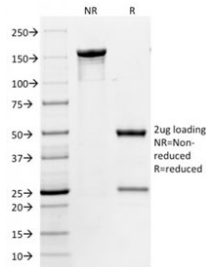
Availability	1-3 business days
Species Reactivity	Human
Format	Purified
Clonality	Monoclonal (mouse origin)
Isotype	Mouse IgG1, kappa
Clone Name	158-2B3
Purity	Protein G affinity chromatography
UniProt	P16284
Localization	Cell surface and cytoplasm of endothelial cells
Applications	Flow Cytometry : 1-2ug/10 <sup>6</sup> cells Immunofluorescence : 1-2ug/ml
Limitations	This PECAM-1 antibody is available for research use only.



Immunofluorescent staining of PFA-fixed human Jurkat cells with PECAM-1 antibody (green, clone 158-2B3) and Reddot nuclear counterstain (red).



Flow cytometry testing of PFA-fixed human Jurkat cells with PECAM-1 antibody (clone 158-2B3); Red=isotype control, Blue= PECAM-1 antibody.



SDS-PAGE analysis of purified, BSA-free PECAM-1 antibody (clone 158-2B3) as confirmation of integrity and purity.

## Description

CD31 (PECAM-1) is a transmembrane glycoprotein member of the immunoglobulin supergene family of adhesion molecules. CD31 is expressed by stem cells of the hematopoietic system and is primarily used to identify and concentrate these cells for experimental studies as well as for bone marrow transplantation. Anti-CD31 has shown to be highly specific and sensitive for vascular endothelial cells. Staining of nonvascular tumors (excluding hematopoietic neoplasms) is rare. CD31 mAb reacts with normal, benign, and malignant endothelial cells which make up blood vessel lining. The level of CD31 expression can help to determine the degree of tumor angiogenesis, and a high level of CD31 expression may imply a rapidly growing tumor and potentially a predictor of tumor recurrence.

## Application Notes

Optimal dilution of the PECAM-1 antibody should be determined by the researcher.

## Immunogen

Stimulated human leukocytes (Workshop VI) were used as the immunogen for the PECAM-1 antibody.

## Storage

Store the PECAM-1 antibody at 2-8°C (with azide) or aliquot and store at -20°C or colder (without azide).