

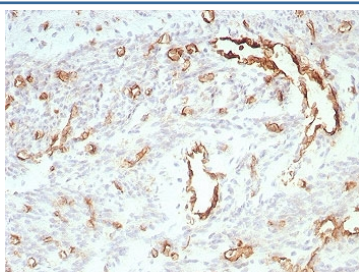
PECAM-1 Antibody [clone C31/8828R] (V4544)

Catalog No.	Formulation	Size
V4544-100UG	0.2 mg/ml in 1X PBS with 0.1 mg/ml BSA (US sourced), 0.05% sodium azide	100 ug
V4544-20UG	0.2 mg/ml in 1X PBS with 0.1 mg/ml BSA (US sourced), 0.05% sodium azide	20 ug
V4544SAF-100UG	1 mg/ml in 1X PBS; BSA free, sodium azide free	100 ug

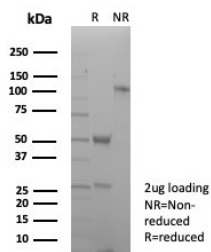
Recombinant **RABBIT MONOCLONAL**

[Bulk quote request](#)

Availability	1-3 business days
Species Reactivity	Human
Format	Purified
Clonality	Recombinant Rabbit Monoclonal
Isotype	Rabbit IgG, kappa
Clone Name	C31/8828R
Purity	Protein A/G affinity
UniProt	P16284
Localization	Cell Surface, Cytoplasm
Applications	Immunohistochemistry (FFPE) : 1-2ug/ml for 30 min at RT
Limitations	This PECAM-1 antibody is available for research use only.



IHC staining of FFPE human uterus tissue with PECAM-1 antibody (clone C31/8828R).
 HIER: boil tissue sections in pH 9 10mM Tris with 1mM EDTA for 20 min and allow to cool before testing.



SDS-PAGE analysis of purified, BSA-free PECAM-1 antibody (clone C31/8828R) as confirmation of integrity and purity.

Description

CD31 (PECAM-1) is a transmembrane glycoprotein member of the immunoglobulin supergene family of adhesion molecules. CD31 is expressed by stem cells of the hematopoietic system and is primarily used to identify and concentrate these cells for experimental studies as well as for bone marrow transplantation. Anti-CD31 has shown to be highly specific and sensitive for vascular endothelial cells. Staining of nonvascular tumors (excluding hematopoietic neoplasms) is rare. CD31 mAb reacts with normal, benign, and malignant endothelial cells which make up blood vessel lining. The level of CD31 expression can help to determine the degree of tumor angiogenesis, and a high level of CD31 expression may imply a rapidly growing tumor and potentially a predictor of tumor recurrence.

Application Notes

Optimal dilution of the PECAM-1 antibody should be determined by the researcher.

Immunogen

A recombinant partial protein sequence (within amino acids 538-738) from the human protein was used as the immunogen for the PECAM-1 antibody.

Storage

Aliquot the PECAM-1 antibody and store frozen at -20oC or colder. Avoid repeated freeze-thaw cycles.