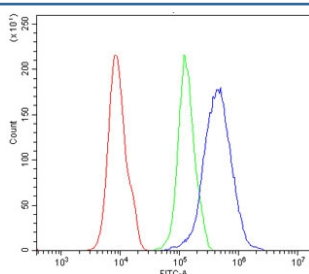


PDX1 Antibody / Pancreas/duodenum homeobox protein 1 (RQ5749)

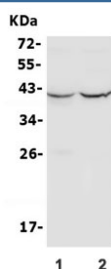
Catalog No.	Formulation	Size
RQ5749	0.5mg/ml if reconstituted with 0.2ml sterile DI water	100 ug

Bulk quote request

Availability	1-3 business days
Species Reactivity	Human
Format	Antigen affinity purified
Clonality	Polyclonal (rabbit origin)
Isotype	Rabbit IgG
Purity	Affinity purified
Buffer	Lyophilized from 1X PBS with 2% Trehalose and 0.025% sodium azide
UniProt	P52945
Applications	Western Blot : 0.5-1ug/ml Flow Cytometry : 1-3ug/million cells Direct ELISA : 0.1-0.5ug/ml
Limitations	This PDX1 antibody is available for research use only.



Flow cytometry testing of human 293T cells with PDX1 antibody at 1ug/million cells (blocked with goat sera); Red=cells alone, Green=isotype control, Blue= PDX1 antibody.



Western blot testing of human 1) HeLa and 2) HEK293 lysate with PDX1 antibody. Observed molecular weight 31/40-46kDa (unmodified/modified).

Description

PDX1 (pancreatic and duodenal homeobox 1), also known as insulin promoter factor 1, is a transcription factor in the ParaHox gene cluster. The protein encoded by this gene is a transcriptional activator of several genes, including insulin, somatostatin, glucokinase, islet amyloid polypeptide, and glucose transporter type 2. The encoded nuclear protein is involved in the early development of the pancreas and plays a major role in glucose-dependent regulation of insulin gene expression. Defects in this gene are a cause of pancreatic agenesis, which can lead to early-onset insulin-dependent diabetes mellitus (IDDM), as well as maturity onset diabetes of the young type 4 (MODY4).

Application Notes

Optimal dilution of the PDX1 antibody should be determined by the researcher.

Immunogen

Recombinant human protein (amino acids E4-K200) was used as the immunogen for the PDX1 antibody.

Storage

After reconstitution, the PDX1 antibody can be stored for up to one month at 4°C. For long-term, aliquot and store at -20°C. Avoid repeated freezing and thawing.