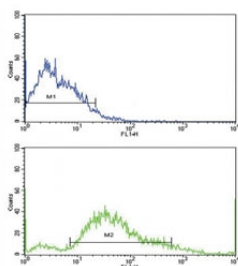


## PDGFR beta Antibody (CD140b) (F50659)

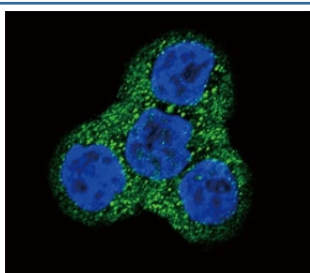
Catalog No.	Formulation	Size
F50659-0.4ML	In 1X PBS, pH 7.4, with 0.09% sodium azide	0.4 ml
F50659-0.08ML	In 1X PBS, pH 7.4, with 0.09% sodium azide	0.08 ml

[Bulk quote request](#)

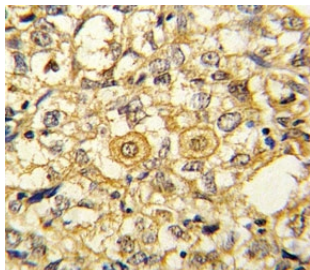
<b>Availability</b>	Backordered; estimated date of availability: December 2020
<b>Species Reactivity</b>	Human
<b>Format</b>	Purified
<b>Clonality</b>	Polyclonal (rabbit origin)
<b>Isotype</b>	Rabbit Ig
<b>Purity</b>	Purified
<b>UniProt</b>	P09619
<b>Applications</b>	IHC (Paraffin) : 1:10-1:50 Immunofluorescence : 1:10-1:50 Flow Cytometry : 1:10-1:50 Western Blot : 1:1000
<b>Limitations</b>	This PDGFR beta antibody is available for research use only.



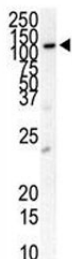
Flow cytometric analysis of SK-Br-3 cells using PDGFR beta antibody (bottom histogram) compared to a negative control (top histogram). FITC-conjugated goat-anti-rabbit secondary Ab was used for the analysis.



Confocal immunofluorescent analysis of PDGFR beta antibody with WiDr cells followed by Alexa Fluor 488-conjugated goat anti-rabbit IgG (green). DAPI was used as a nuclear counterstain (blue).



IHC analysis of FFPE human breast carcinoma stained with PDGFR beta antibody



Western blot analysis of anti-PDGFR beta antibody

## Description

PDGFRB is a cell surface tyrosine kinase receptor for members of the platelet-derived growth factor family. These growth factors are mitogens for cells of mesenchymal origin. The identity of the growth factor bound to a receptor monomer determines whether the functional receptor is a homodimer or a heterodimer, composed of both platelet-derived growth factor receptor alpha and beta polypeptides. The gene is flanked on chromosome 5 by the genes for granulocyte-macrophage colony-stimulating factor and macrophage-colony stimulating factor receptor; all three genes may be implicated in the 5-q syndrome. A translocation between chromosomes 5 and 12, that fuses the gene to that of the translocation, ETS, leukemia gene, results in chronic myelomonocytic leukemia.

## Application Notes

The stated application concentrations are suggested starting amounts. Titration of the PDGFR beta antibody may be required due to differences in protocols and secondary/substrate sensitivity.

## Immunogen

A portion of amino acids 40-72 from the human protein was used as the immunogen for this CD140b / PDGFR beta antibody.

## Storage

Store at 4°C for up to one month. For long term, aliquot the PDGFR beta antibody and store frozen at -20°C or colder. Avoid repeated freeze-thaw cycles.