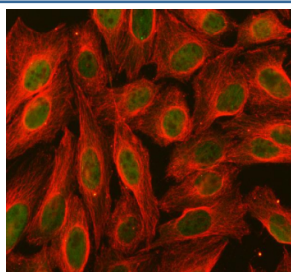


## PDCD2 Antibody / Programmed cell death protein 2 (RQ8910)

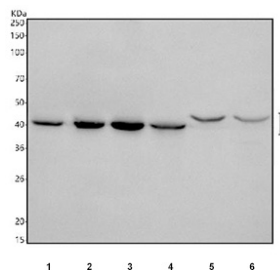
Catalog No.	Formulation	Size
RQ8910	0.5mg/ml if reconstituted with 0.2ml sterile DI water	100 ug

**Bulk quote request**

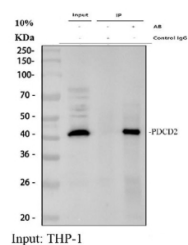
<b>Availability</b>	1-3 business days
<b>Species Reactivity</b>	Human, Mouse, Rat
<b>Format</b>	Antigen affinity purified
<b>Clonality</b>	Polyclonal (rabbit origin)
<b>Isotype</b>	Rabbit IgG
<b>Purity</b>	Antigen affinity purified
<b>Buffer</b>	Lyophilized from 1X PBS with 2% Trehalose
<b>UniProt</b>	Q16342
<b>Localization</b>	Nuclear
<b>Applications</b>	Western Blot : 0.5-1ug/ml Immunofluorescence : 5ug/ml Flow Cytometry : 1-3ug/million cells Immunoprecipitation : 2ug per 500ug of lysate
<b>Limitations</b>	This PDCD2 antibody is available for research use only.



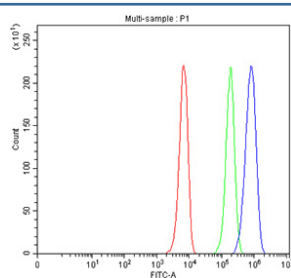
Immunofluorescent staining of FFPE human U-2 OS cells with PDCD2 antibody (green) and Alpha Tubulin mAb (red). HIER: steam section in pH6 citrate buffer for 20 min.



Western blot testing of 1) human HeLa, 2) human Jurkat, 3) human K562, 4) human ThP-1, 5) rat liver and 6) mouse liver tissue lysate with PDCD2 antibody. Expected molecular weight: 39-45 kDa.



Immunoprecipitation of PDCD2 protein from 500ug of human ThP-1 whole cell lysate with 2ug of PDCD2 antibody.



Flow cytometry testing of fixed and permeabilized human K562 cells with PDCD2 antibody at 1ug/million cells (blocked with goat sera); Red=cells alone, Green=isotype control, Blue= PDCD2 antibody.