

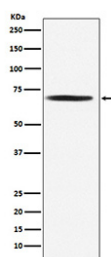
PDC-E2 Antibody / Pyruvate Dehydrogenase E2 [clone 23D09] (RQ8897)

Catalog No.	Formulation	Size
RQ8897	Antibody in PBS with 0.02% sodium azide, 50% glycerol and 0.4-0.5mg/ml BSA	100 ul

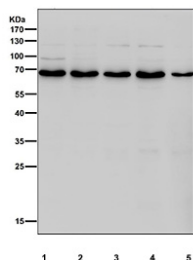
Recombinant **RABBIT MONOCLONAL**

[Bulk quote request](#)

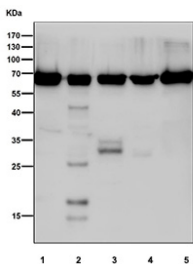
Availability	1-3 days
Species Reactivity	Human, Mouse, Rat
Format	Purified
Clonality	Recombinant Rabbit Monoclonal
Isotype	Rabbit IgG
Clone Name	23D09
Purity	Affinity chromatography
UniProt	P10515
Localization	Cytoplasm
Applications	Western Blot : 1:500 Immunohistochemistry (FFPE) : 1:50 Immunofluorescence : 1:50
Limitations	This PDC-E2 antibody is available for research use only.



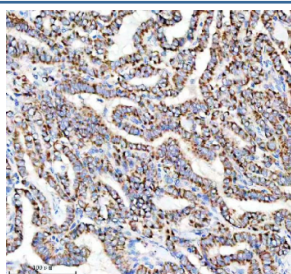
Western blot testing of human Jurkat cell lysate with PDC-E2 antibody. Predicted molecular weight ~69 kDa.



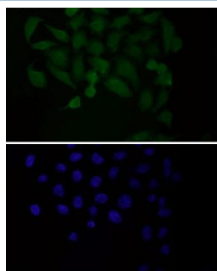
Western blot testing of human 1) HeLa, 2) Jurkat, 3) HepG2, 4) MCF7 and 5) SH-SY5Y cell lysate with PDC-E2 antibody. Predicted molecular weight ~69 kDa.



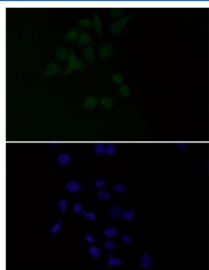
Western blot testing of human 1) HEK293, 2) ThP-1, 3) A431, 4) SH-SY5Y and 5) A673 cell lysate with PDC-E2 antibody. Predicted molecular weight ~69 kDa.



IHC staining of FFPE human thyroid cancer tissue with PDC-E2 antibody, HRP-secondary and DAB substrate. HIER: boil tissue sections in pH8 EDTA for 20 min and allow to cool before testing.



Immunofluorescent staining of FFPE human HeLa cells with PDC-E2 antibody (green) and DAPI nuclear stain (blue). HIER: steam section in pH6 citrate buffer for 20 min.



Immunofluorescent staining of FFPE human HeLa cells with PDC-E2 antibody (green) and DAPI nuclear stain (blue). HIER: steam section in pH6 citrate buffer for 20 min.