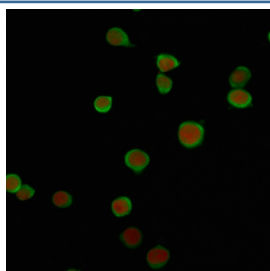


PD-L2 Antibody [clone PDL2/2676] (V7581)

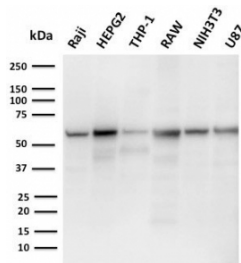
| Catalog No. | Formulation | Size |
|----------------|--|--------|
| V7581-100UG | 0.2 mg/ml in 1X PBS with 0.1 mg/ml BSA (US sourced) and 0.05% sodium azide | 100 ug |
| V7581-20UG | 0.2 mg/ml in 1X PBS with 0.1 mg/ml BSA (US sourced) and 0.05% sodium azide | 20 ug |
| V7581SAF-100UG | 1 mg/ml in 1X PBS; BSA free, sodium azide free | 100 ug |

Bulk quote request

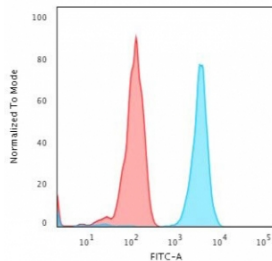
| | |
|---------------------------|--|
| Availability | 1-3 business days |
| Species Reactivity | Human |
| Format | Purified |
| Clonality | Monoclonal (mouse origin) |
| Isotype | Mouse IgG1, kappa |
| Clone Name | PDL2/2676 |
| Purity | Protein G affinity chromatography |
| UniProt | Q9BQ51 |
| Localization | Cytoplasm, cell surface |
| Applications | ELISA (order BSA/sodium Azide-free Format For Coating) : Flow Cytometry : 1-2ug/10 ⁶ cells Immunofluorescence : 1-2ug/ml Western Blot : 1-2ug/ml |
| Limitations | This PD-L2 antibody is available for research use only. |



Immunofluorescent staining of human Jurkat cells with PD-L2 antibody (green, clone PDL2/2676) and Reddot nuclear stain (red).

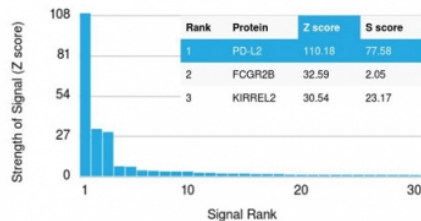


Western blot testing of 1) human Raji, 2) human HepG2, 3) human ThP-1, 4) mouse RAW264.7, 5) mouse NIH-3T3 and 6) human U-87 MG cell lysate with PD-L2 antibody (clone PDL2/2676). Expected molecular weight: 31-60 kDa depending on glycosylation level.

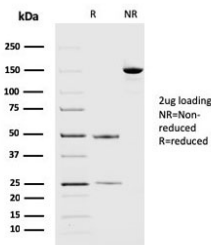


Flow cytometry testing of human Jurkat cells with PD-L2 antibody (clone PDL2/2676); Red=isotype control, Blue= PD-L2 antibody.

Human Protein Microarray Specificity Validation



Analysis of HuProt(TM) microarray containing more than 19,000 full-length human proteins using PD-L2 antibody (clone PDL2/2676). These results demonstrate the foremost specificity of the PDL2/2676 mAb. **Z- and S- score:** The Z-score represents the strength of a signal that an antibody (in combination with a fluorescently-tagged anti-IgG secondary Ab) produces when binding to a particular protein on the HuProt(TM) array. Z-scores are described in units of standard deviations (SDs) above the mean value of all signals generated on that array. If the targets on the HuProt(TM) are arranged in descending order of the Z-score, the S-score is the difference (also in units of SDs) between the Z-scores. The S-score therefore represents the relative target specificity of an Ab to its intended target.



SDS-PAGE analysis of purified, BSA-free PD-L2 antibody (clone PDL2/2676) as confirmation of integrity and purity.

Description

Recognizes a protein identified as PD-L2 (same as PDCD1LG2). Engagement of CD28 by B7-1 (CD80) or B7-2 (CD86) in the presence of antigen promotes T cell proliferation, cytokine production, differentiation of effector T cells and the induction of Bcl-x, a promoter of T cell survival. Conversely, engagement of CTLA4 by B7-1 or B7-2 may inhibit proliferation and IL-2 production. PD-L2 does not bind CD28, cytotoxic T lymphocyte A4 or ICOS (inducible co-stimulator). The constitutive expression of PD-L1 and PD-L2 on parenchymal cells of heart, lung and kidney suggests that the Pdc1-Pdc-L system could provide unique negative signaling to help prevent autoimmune disease.

Application Notes

Optimal dilution of the PD-L2 antibody should be determined by the researcher.

Immunogen

A recombinant fragment of human PD-L2 protein within amino acids 27-220 was used as the immunogen for the PD-L2 antibody.

Storage

Store the PD-L2 antibody at 2-8oC (with azide) or aliquot and store at -20oC or colder (without azide).