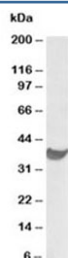


## PD-L1 Antibody (R33263)

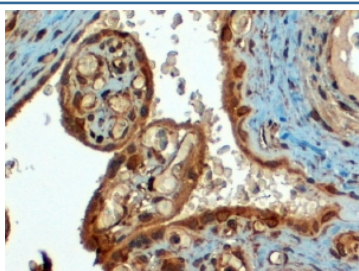
Catalog No.	Formulation	Size
R33263-100UG	0.5 mg/ml in 1X TBS, pH7.3, with 0.5% BSA (US sourced) and 0.02% sodium azide	100 ug

[Bulk quote request](#)

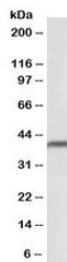
Availability	1-3 business days
Species Reactivity	Human
Format	Antigen affinity purified
Clonality	Polyclonal (goat origin)
Isotype	Goat Ig
Purity	Antigen affinity
Gene ID	29126
Localization	Cytoplasmic, membranous
Applications	Western Blot : 1-3ug/ml Immunohistochemistry (FFPE) : 4-6ug/ml ELISA (peptide) LOD : 1:128000
Limitations	This PD-L1 antibody is available for research use only.



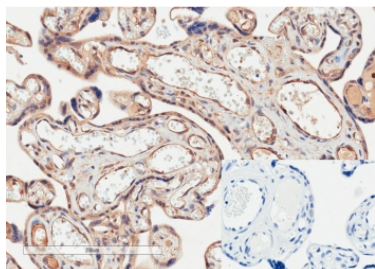
Western blot testing of human heart lysate with PD-L1 antibody at 1ug/ml. Predicted molecular weight ~34 kDa (unmodified), 45-70 kDa (glycosylated).



IHC staining of FFPE human placenta with PD-L1 antibody at 4ug/ml. HIER: steamed with pH9 Tris/EDTA buffer, HRP-staining.



Western blot testing of human heart lysate with PD-L1 antibody at 0.1ug/ml. Predicted molecular weight ~34 kDa (unmodified), 45-70 kDa (glycosylated).



IHC testing of FFPE human placenta tissue with PD-L1 antibody at 2ug/ml. Required HIER: steamed antigen retrieval with pH6 citrate buffer; HRP-staining.

## Description

Additional name(s) for this target protein: Programmed cell death 1 ligand 1; CD274

## Application Notes

Optimal dilution of the PD-L1 antibody should be determined by the researcher.

## Immunogen

Amino acids CKKQSDTHLEET were used as the immunogen for this PD-L1 antibody.

## Storage

Aliquot and store the PD-L1 antibody at -20oC.