

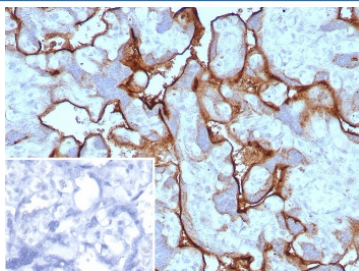
PD-L1 Antibody / Programmed cell death 1 ligand 1 / B7-H1 / CD274 [clone PDL1/8591R] (V5292)

Catalog No.	Formulation	Size
V5292-100UG	0.2 mg/ml in 1X PBS with 0.1 mg/ml BSA (US sourced), 0.05% sodium azide	100 ug
V5292-20UG	0.2 mg/ml in 1X PBS with 0.1 mg/ml BSA (US sourced), 0.05% sodium azide	20 ug
V5292SAF-100UG	1 mg/ml in 1X PBS; BSA free, sodium azide free	100 ug

Recombinant **RABBIT MONOCLONAL**

[Bulk quote request](#)

Availability	1-3 business days
Species Reactivity	Human
Format	Purified
Clonality	Recombinant Rabbit Monoclonal
Isotype	Rabbit IgG, kappa
Clone Name	PDL1/8591R
Purity	Protein A/G affinity
UniProt	Q9NZQ7
Localization	Cell Surface, Cytoplasm
Applications	Immunohistochemistry (FFPE) : 1-2ug/ml for 30 min at RT
Limitations	This PD-L1 antibody is available for research use only.



IHC staining of FFPE human placental tissue with PD-L1 antibody (clone PDL1/8591R). Inset: PBS used in place of primary Ab (secondary Ab negative control). HIER: boil tissue sections in pH 9 10mM Tris with 1mM EDTA for 20 min and allow to cool before testing.

Description

PD-L1 is a checkpoint regulator in immune cells, it is expressed on immune or non-hematopoietic cells. Expression of the protein is seen during pregnancy where it has a role in suppressing the immune system. PD-L1 induces an inhibitory signal in activated T-cells and promotes T-cell apoptosis. It is overexpressed in a number of different cancers where it is

believed to play a significant role in the cancer's ability to evade the immune system.

Application Notes

Optimal dilution of the PD-L1 antibody should be determined by the researcher.

Immunogen

A recombinant partial protein sequence (within amino acids 190-290) from the human protein was used as the immunogen for the PD-L1 antibody.

Storage

Aliquot the PD-L1 antibody and store frozen at -20°C or colder. Avoid repeated freeze-thaw cycles.