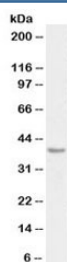


PD-L1 Antibody Biotin Conjugate (R33263BTN)

| Catalog No. | Formulation | Size |
|-------------|---|--------|
| R33263BTN | 0.5 mg/ml in 1X TBS, pH7.3, with 0.5% BSA (US sourced) and 0.02% sodium azide | 100 ug |

[Bulk quote request](#)

| | |
|--------------------|---|
| Availability | 1-3 business days |
| Species Reactivity | Human |
| Format | Biotin Conjugate |
| Clonality | Polyclonal (goat origin) |
| Isotype | Goat Ig |
| Purity | Antigen affinity |
| Gene ID | 29126 |
| Applications | Western Blot : 0.3-1ug/ml Immunohistochemistry (FFPE) : suitable ELISA (peptide) LOD : 1:128000 |
| Limitations | This PD-L1 antibody is available for research use only. |



Western blot testing of human heart lysate with biotinylated PD-L1 antibody at 0.3ug/ml.
Predicted molecular weight ~34kDa (unmodified), 45-70 kDa (glycosylated).

Description

Additional name(s) for this target protein: Programmed cell death 1 ligand 1; CD274

Application Notes

Optimal dilution of the PD-L1 antibody should be determined by the researcher.

Immunogen

Amino acids CKKQSDTHLEET were used as the immunogen for this PD-L1 antibody.

Storage

Aliquot and store the PD-L1 antibody at -20oC.