

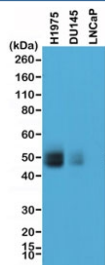
PD-L1 Antibody / B7-H1 / CD274 [clone RM320] (R20345)

Catalog No.	Formulation	Size
R20345-0.1ML	Antibody in PBS with 50% glycerol, 1% BSA and 0.09% sodium azide	100 ul

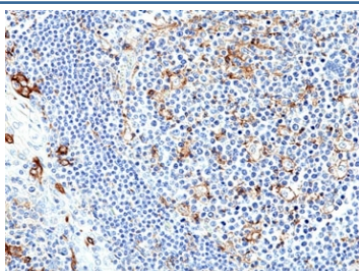
Recombinant **RABBIT MONOCLONAL**

[Bulk quote request](#)

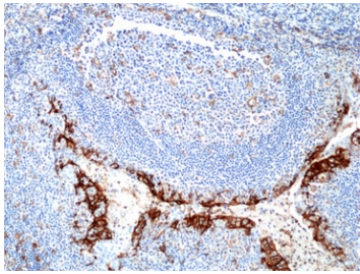
Availability	1-3 business days
Species Reactivity	Human
Format	Purified
Clonality	Recombinant Rabbit Monoclonal
Isotype	Rabbit IgG
Clone Name	RM320
Purity	Protein A purified from animal origin-free supernatant
UniProt	Q9EP73
Localization	Cell surface, cytoplasmic
Applications	Immunohistochemistry (FFPE) : 1:200-1:1000 Western Blot : 1:500-1:1000 Immunocytochemistry : 1:200-1:500
Limitations	This recombinant PD-L1 antibody is available for research use only.



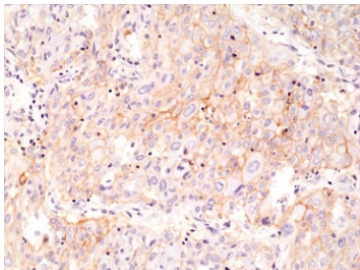
Western blot testing of human tumor cell line lysate with recombinant PD-L1 antibody at 1:1000. DU145 and LNCaP are prostate cancer cell lines with very minor PD-L1 expression. Predicted molecular weight ~34 kDa (unmodified), 45-70 kDa (glycosylated).



IHC staining of FFPE human tonsil tissue with recombinant PD-L1 antibody at 1:250.



IHC staining of FFPE human tonsil tissue with recombinant PD-L1 antibody at 1:250.



IHC staining of FFPE human lung cancer tissue with recombinant PD-L1 antibody at 1:1000.

Description

This antibody reacts to human PD-L1 (CD274, B7-H1).

Application Notes

The stated application concentrations are suggested starting points. Titration of the recombinant PD-L1 antibody may be required due to differences in protocols and secondary/substrate sensitivity.

Immunogen

A peptide corresponding to the C-terminus of human PD-L1 was used as the immunogen for the recombinant PD-L1 antibody.

Storage

Store the recombinant PD-L1 antibody at -20°C.