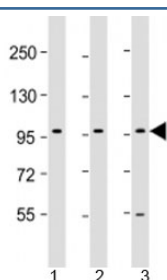


## PCDH10 Antibody / Protocadherin 10 (F53847)

Catalog No.	Formulation	Size
F53847-0.2ML	In 1X PBS, pH 7.4, with 0.09% sodium azide	0.2 ml
F53847-0.05ML	In 1X PBS, pH 7.4, with 0.09% sodium azide	0.05 ml

[Bulk quote request](#)

<b>Availability</b>	1-3 business days
<b>Species Reactivity</b>	Human
<b>Format</b>	Antigen affinity purified
<b>Clonality</b>	Polyclonal (rabbit origin)
<b>Isotype</b>	Rabbit Ig
<b>Purity</b>	Antigen affinity
<b>UniProt</b>	Q9P2E7
<b>Applications</b>	Western Blot : 1:1000-1:2000
<b>Limitations</b>	This PCDH10 antibody is available for research use only.



Western blot testing of human 1) HepG2, 2) PC-3 and 3) U-87 MG cell lysate with PCDH10 antibody at 1:2000. Predicted molecular weight: 113 kDa.

### Description

Protocadherin-10 is a potential calcium-dependent cell-adhesion protein.

### Application Notes

Titration of the PCDH10 antibody may be required due to differences in protocols and secondary/substrate sensitivity.

### Immunogen

A portion of amino acids 128-160 from the human protein was used as the immunogen for the PCDH10 antibody.

### Storage

Aliquot the PCDH10 antibody and store frozen at -20oC or colder. Avoid repeated freeze-thaw cycles.