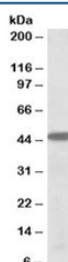


## PBX1 Antibody (R33189)

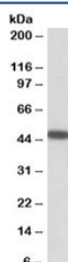
Catalog No.	Formulation	Size
R33189-100UG	0.5 mg/ml in 1X TBS, pH7.3, with 0.5% BSA (US sourced) and 0.02% sodium azide	100 ug

[Bulk quote request](#)

Availability	1-3 business days
Species Reactivity	Human, Mouse, Rat
Predicted Reactivity	Dog
Format	Antigen affinity purified
Clonality	Polyclonal (goat origin)
Isotype	Goat Ig
Purity	Antigen affinity
Gene ID	5087
Applications	Western Blot : 0.3-1ug/ml ELISA (peptide) LOD : 1:32000
Limitations	This PBX1 antibody is available for research use only.



Western blot testing of K562 lysate with PBX1 antibody at 0.5ug/ml. Predicted molecular weight: ~46kDa.



Western blot of mouse eye lysate with PBX1 antibody at 0.5ug/ml. Predicted molecular weight: ~46kDa.

## Description

Additional name(s) for this target protein: Pre-B-cell leukemia homeobox 1

## Application Notes

Optimal dilution of the PBX1 antibody should be determined by the researcher.

## Immunogen

Amino acids ATNVSAHGSQLANSPS were used as the immunogen for this PBX1 antibody.

## Storage

Aliquot and store the PBX1 antibody at -20oC.