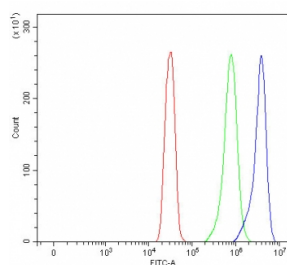


PBLD Antibody / Phenazine biosynthesis-like domain-containing protein (RQ8231)

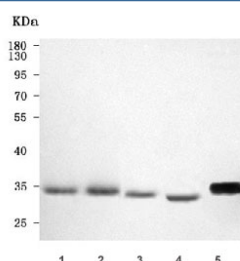
Catalog No.	Formulation	Size
RQ8231	0.5mg/ml if reconstituted with 0.2ml sterile DI water	100 ug

Bulk quote request

Availability	1-3 business days
Species Reactivity	Human, Mouse, Rat
Format	Antigen affinity purified
Clonality	Polyclonal (rabbit origin)
Isotype	Rabbit IgG
Purity	Antigen affinity purified
Buffer	Lyophilized from 1X PBS with 2% Trehalose
UniProt	P30039
Applications	Western Blot : 0.5-1ug/ml Flow Cytometry : 1-3ug/million cells Direct ELISA : 0.1-0.5ug/ml
Limitations	This PBLD antibody is available for research use only.



Flow cytometry testing of fixed and permeabilized human SiHa cells with PBLD antibody at 1ug/million cells (blocked with goat sera); Red=cells alone, Green=isotype control, Blue= PBLD antibody.



Western blot testing of 1) human HCCT, 2) human HCCP, 3) rat liver, 4) rat RH35 and 5) mouse liver tissue lysate with PBLD antibody. Predicted molecular weight ~32 kDa.

Description

PBLD is member of the phenazine biosynthesis-like protein (PhzF) family. PBLD which is expressed in most tissues is the only representative of the PhzF family in the human genome. PBLD participates in the MAPK signaling pathway. PBLD is involved in multiple basic cellular functions, its expression is elevated in several disease processes, including Insulin resistance, folate deficiency and hypotension.

Application Notes

Optimal dilution of the PBLD antibody should be determined by the researcher.

Immunogen

E. coli-derived recombinant human protein (amino acids K2-R258) was used as the immunogen for the PBLD antibody.

Storage

After reconstitution, the PBLD antibody can be stored for up to one month at 4oC. For long-term, aliquot and store at -20oC. Avoid repeated freezing and thawing.