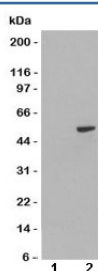


PAX8 Antibody (R33158)

Catalog No.	Formulation	Size
R33158-100UG	0.5 mg/ml in 1X TBS, pH7.3, with 0.5% BSA (US sourced) and 0.02% sodium azide	100 ug

[Bulk quote request](#)

Availability	1-3 business days
Species Reactivity	Human
Format	Antigen affinity purified
Clonality	Polyclonal (goat origin)
Isotype	Goat Ig
Purity	Antigen affinity
Gene ID	7849
Localization	Nuclear, cytoplasmic
Applications	Western Blot : 1-3ug/ml ELISA (peptide) LOD : 1:32000
Limitations	This PAX8 antibody is available for research use only.



Western blot of HEK293 lysate overexpressing human PAX8A probed with PAX8 antibody at 1ug/ml [mock transfection in lane 1]. Predicted molecular weight ~48kDa but also observed at 55-60 kDa.

Description

Additional name(s) for this target protein: Paired box gene 8

Application Notes

Optimal dilution of the PAX8 antibody should be determined by the researcher.

Immunogen

Amino acids AQP GSDKRKMDD were used as the immunogen for this PAX8 antibody.

Storage

Aliquot and store the PAX8 antibody at -20oC.