

PAX8 Antibody Cocktail [clone PAX8/1491 + PAX8/1492] (V3414)

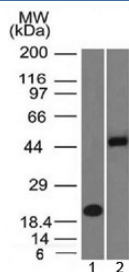
Catalog No.	Formulation	Size
V3414-100UG	0.2 mg/ml in 1X PBS with 0.1 mg/ml BSA (US sourced) and 0.05% sodium azide	100 ug
V3414-20UG	0.2 mg/ml in 1X PBS with 0.1 mg/ml BSA (US sourced) and 0.05% sodium azide	20 ug
V3414SAF-100UG	1 mg/ml in 1X PBS; BSA free, sodium azide free	100 ug

Bulk quote request

Availability	1-3 business days
Species Reactivity	Human
Format	Purified
Clonality	Monoclonal (mouse origin)
Isotype	Mouse IgG2b + Mouse IgG2a
Clone Name	PAX8/1491 + PAX8/1492
Purity	Protein G affinity chromatography
UniProt	Q06710
Localization	Nuclear, cytoplasmic
Applications	Flow Cytometry : 0.5-1ug/10 ⁶ cells Immunofluorescence : 1-2ug/ml Western Blot : 0.5-1ug/ml Immunohistochemistry (FFPE) : 1-2ug/ml for 30 min at RT
Limitations	This PAX8 antibody cocktail is available for research use only.



IHC testing of FFPE human renal cell carcinoma with PAX8 antibody cocktail (clone PAX8-1491 + PAX8/1492). Required HIER: boil tissue sections in 10mM Tris buffer with 1mM EDTA, pH 9, for 10-20 min followed by cooling at RT for 20 minutes.



Western blot testing of 1) human partial recombinant protein and 2) human Raji cell lysate with PAX8 antibody cocktail (clone PAX8/1491 + PAX8/1492). Predicted molecular weight of isoforms 1-5: 31, 35, 42, 43 and 48 kDa, respectively. PAX8 can also be observed at ~62 kDa.

Description

PAX8 is a member of the paired box (PAX) family of transcription factors. This nuclear protein is involved in thyroid follicular cell development and expression of thyroid-specific genes. Mutations in this gene have been associated with thyroid dysgenesis, thyroid follicular carcinomas, and atypical thyroid adenomas. PAX8 is expressed in the thyroid (and associated carcinomas), non-ciliated mucosal cells of the fallopian tubes, and simple ovarian inclusion cysts, but not normal ovarian surface epithelial cells. PAX8 is expressed in a high percentage of ovarian serous, endometrioid, and clear cell carcinomas, but only rarely in primary ovarian mucinous adenocarcinomas. PAX-8 expression is reported in renal tubules as well as renal cell carcinoma, nephroblastoma, and seminoma. PAX8 antibody may be used as an additional immunohistochemical marker for renal epithelial tumors.

Application Notes

Optimal dilution of the PAX-8 antibody cocktail should be determined by the researcher.

Immunogen

A human recombinant fragment (aa 60-261) was used as the immunogen for the PAX8 antibody cocktail.

Storage

Store the PAX8 antibody cocktail at 2-8°C (with azide) or aliquot and store at -20°C or colder (without azide).