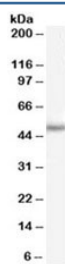


PAX6 Antibody (R35582)

Catalog No.	Formulation	Size
R35582-100UG	0.5 mg/ml in 1X TBS, pH7.3, with 0.5% BSA (US sourced) and 0.02% sodium azide	100 ug

[Bulk quote request](#)

Availability	1-3 business days
Species Reactivity	Human, Mouse
Predicted Reactivity	Rat
Format	Antigen affinity purified
Clonality	Polyclonal (goat origin)
Isotype	Goat Ig
Purity	Antigen affinity
Gene ID	5080
Applications	Western Blot : 0.3-1ug/ml ELISA (peptide) LOD : 1:32000
Limitations	This PAX6 antibody is available for research use only.



Western blot testing of mouse eye lysate with PAX6 antibody at 0.5ug/ml. Predicted molecular weight ~48kDa.

Description

Additional name(s) for this target protein: Paired box gene 6

Application Notes

Optimal dilution of the PAX6 antibody should be determined by the researcher.

Immunogen

Amino acids REEKLRNQRRQASN were used as the immunogen for this PAX6 antibody.

Storage

Aliquot and store the PAX6 antibody at -20oC.