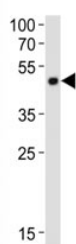


## Pax6 Antibody (F53058)

Catalog No.	Formulation	Size
F53058-0.4ML	In 1X PBS, pH 7.4, with 0.09% sodium azide	0.4 ml
F53058-0.08ML	In 1X PBS, pH 7.4, with 0.09% sodium azide	0.08 ml

[Bulk quote request](#)

<b>Availability</b>	1-3 business days
<b>Species Reactivity</b>	Mouse
<b>Predicted Reactivity</b>	Human, Rat, Bovine, Chicken, Zebrafish, Xenopus
<b>Format</b>	Antigen affinity purified
<b>Clonality</b>	Polyclonal (rabbit origin)
<b>Isotype</b>	Rabbit Ig
<b>Purity</b>	Antigen affinity
<b>UniProt</b>	P63015
<b>Applications</b>	Western Blot : 1:1000
<b>Limitations</b>	This Pax6 antibody is available for research use only.



Western blot analysis of lysate from mouse cerebellum tissue lysate using Pax6 antibody diluted at 1:1000. Predicted molecular weight ~48kDa.

## Description

Transcription factor with important functions in the development of the eye, nose, central nervous system and pancreas. Required for the differentiation of pancreatic islet alpha cells. Competes with PAX4 in binding to a common element in the glucagon, insulin and somatostatin promoters. Regulates specification of the ventral neuron subtypes by establishing the correct progenitor domains (By similarity).

## Application Notes

Titration of the Pax6 antibody may be required due to differences in protocols and secondary/substrate sensitivity.

## Immunogen

This mouse Pax6 antibody was produced from a rabbit immunized with a KLH conjugated synthetic peptide between 404-436 amino acids from the C-terminal region of mouse Pax6.

## Storage

Aliquot the Pax6 antibody and store frozen at -20oC or colder. Avoid repeated freeze-thaw cycles.