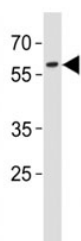


## PAX3 Antibody (F48343)

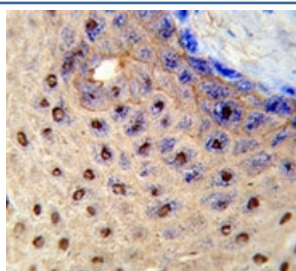
Catalog No.	Formulation	Size
F48343-0.4ML	In 1X PBS, pH 7.4, with 0.09% sodium azide	0.4 ml
F48343-0.08ML	In 1X PBS, pH 7.4, with 0.09% sodium azide	0.08 ml

[Bulk quote request](#)

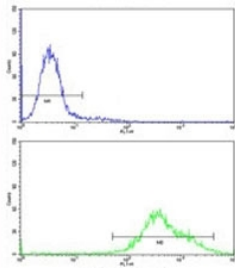
<b>Availability</b>	1-3 business days
<b>Species Reactivity</b>	Human
<b>Predicted Reactivity</b>	Mouse
<b>Format</b>	Antigen affinity purified
<b>Clonality</b>	Polyclonal (rabbit origin)
<b>Isotype</b>	Rabbit Ig
<b>Purity</b>	Antigen affinity
<b>UniProt</b>	P23760
<b>Applications</b>	Western Blot : 1:1000 IHC (Paraffin) : 1:50-1:100 Flow Cytometry : 1:10-1:50
<b>Limitations</b>	This PAX3 antibody is available for research use only.



PAX3 antibody western blot analysis in A431 lysate. Predicted molecular weight: there are 7 isoforms ranging from 22~56kDa.



IHC analysis of FFPE human skin stained with PAX3 antibody



Flow cytometric analysis of K562 cells using PAX3 antibody (bottom histogram) compared to a negative control (top histogram)

## Description

PAX3 probable is a transcription factor associated with development of alveolar rhabdomyosarcoma.

## Application Notes

Titration of the PAX3 antibody may be required due to differences in protocols and secondary/substrate sensitivity.

## Immunogen

A portion of amino acids 98-126 from the human protein was used as the immunogen for this PAX3 antibody.

## Storage

Aliquot the PAX3 antibody and store frozen at -20oC or colder. Avoid repeated freeze-thaw cycles.