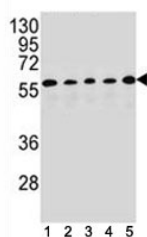


## PAX1 Antibody (F40663)

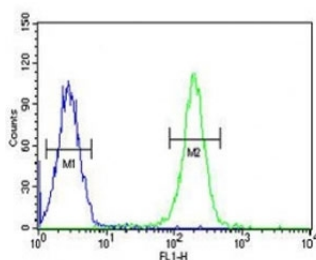
Catalog No.	Formulation	Size
F40663-0.4ML	In 1X PBS, pH 7.4, with 0.09% sodium azide	0.4 ml
F40663-0.08ML	In 1X PBS, pH 7.4, with 0.09% sodium azide	0.08 ml

[Bulk quote request](#)

<b>Availability</b>	1-3 business days
<b>Species Reactivity</b>	Human
<b>Format</b>	Antigen affinity purified
<b>Clonality</b>	Polyclonal (rabbit origin)
<b>Isotype</b>	Rabbit Ig
<b>Purity</b>	Antigen affinity
<b>UniProt</b>	P15863
<b>Applications</b>	Flow Cytometry : 1:10-1:50 Western Blot : 1:1000
<b>Limitations</b>	This PAX1 antibody is available for research use only.



PAX1 antibody western blot analysis in (1) HepG2, (2) MDA-MB453, (3) 293, (4) K562 and (5) MCF-7 lysate. Predicted size 45~55 kDa



PAX1 antibody flow cytometric analysis of K562 cells (right histogram) compared to a negative control (left histogram)

## Description

The PAX genes, including PAX1, are a highly conserved family of developmental control genes that encode transcription factors and have been shown to play a role in pattern formation during embryogenesis in vertebrates.

## Application Notes

Titration of the PAX1 antibody may be required due to differences in protocols and secondary/substrate sensitivity.

## Immunogen

A portion of amino acids 443-471 from the human protein was used as the immunogen for this PAX1 antibody.

## Storage

Aliquot the PAX1 antibody and store frozen at -20oC or colder. Avoid repeated freeze-thaw cycles.