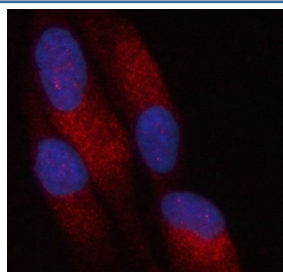


## PATL2 Antibody / PAT1-like protein 2 (RQ7916)

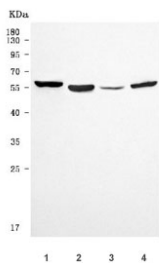
Catalog No.	Formulation	Size
RQ7916	0.5mg/ml if reconstituted with 0.2ml sterile DI water	100 ug

**Bulk quote request**

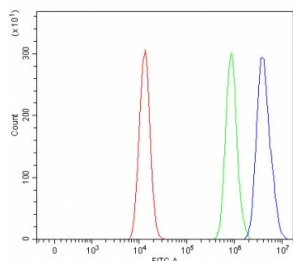
<b>Availability</b>	1-3 business days
<b>Species Reactivity</b>	Human, Mouse, Rat
<b>Format</b>	Antigen affinity purified
<b>Clonality</b>	Polyclonal (rabbit origin)
<b>Isotype</b>	Rabbit IgG
<b>Purity</b>	Antigen affinity purified
<b>Buffer</b>	Lyophilized from 1X PBS with 2% Trehalose
<b>UniProt</b>	C9JE40
<b>Localization</b>	Cytoplasmic, nuclear
<b>Applications</b>	Western Blot : 0.5-1ug/ml Immunofluorescence (FFPE) : 5ug/ml Flow Cytometry : 1-3ug/million cells Direct ELISA : 0.1-0.5ug/ml
<b>Limitations</b>	This PATL2 antibody is available for research use only.



Immunofluorescent staining of FFPE human HeLa cells with PATL2 antibody (green) and DAPI nuclear stain (blue). HIER: steam section in pH6 citrate buffer for 20 min.



Western blot testing of 1) human HeLa, 2) rat C6, 3) mouse testis and 4) mouse NIH 3T3 cell lysate with PATL2 antibody. Predicted molecular weight ~61 kDa.



Flow cytometry testing of human HEL cells with PATL2 antibody at 1ug/million cells (blocked with goat sera); Red=cells alone, Green=isotype control, Blue= PATL2 antibody.

## Description

Predicted to enable RNA binding activity. Predicted to be involved in P-body assembly and deadenylation-dependent decapping of nuclear-transcribed mRNA. Predicted to act upstream of or within negative regulation of cytoplasmic mRNA processing body assembly. Located in cytoplasm.

## Application Notes

Optimal dilution of the PATL2 antibody should be determined by the researcher.

## Immunogen

E. coli-derived recombinant human protein (amino acids Q123-Q411) was used as the immunogen for the PATL2 antibody.

## Storage

After reconstitution, the PATL2 antibody can be stored for up to one month at 4°C. For long-term, aliquot and store at -20°C. Avoid repeated freezing and thawing.