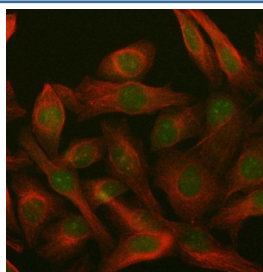


## PARP3 Antibody / ARTD3 (RQ8642)

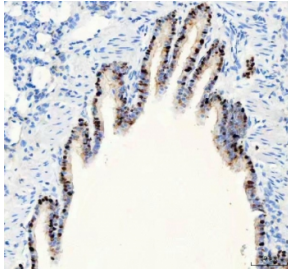
Catalog No.	Formulation	Size
RQ8642	0.5mg/ml if reconstituted with 0.2ml sterile DI water	100 ug

**Bulk quote request**

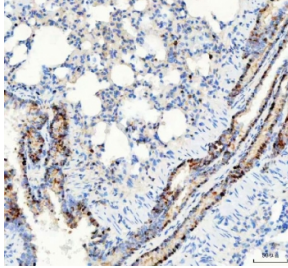
<b>Availability</b>	1-3 days
<b>Species Reactivity</b>	Human, Mouse, Rat, Monkey
<b>Format</b>	Antigen affinity purified
<b>Clonality</b>	Polyclonal (rabbit origin)
<b>Isotype</b>	Rabbit IgG
<b>Purity</b>	Antigen affinity purified
<b>Buffer</b>	Lyophilized from 1X PBS with 2% Trehalose
<b>UniProt</b>	Q9Y6F1
<b>Localization</b>	Nuclear, cytoplasmic
<b>Applications</b>	Western Blot : 0.5-1ug/ml Immunohistochemistry (FFPE) : 2-5ug/ml Immunofluorescence : 5ug/ml ELISA : 0.1-0.5ug/ml
<b>Limitations</b>	This PARP3 antibody is available for research use only.



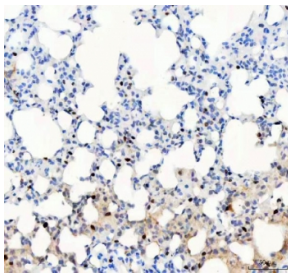
Immunofluorescent staining of FFPE human HeLa cells with PARP3 antibody (green) and Beta Tubulin mAb (red). HIER: steam section in pH6 citrate buffer for 20 min.



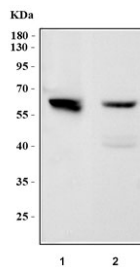
IHC staining of FFPE rat lung tissue with PARP3 antibody. HIER: boil tissue sections in pH8 EDTA for 20 min and allow to cool before testing.



IHC staining of FFPE rat lung tissue with PARP3 antibody. HIER: boil tissue sections in pH8 EDTA for 20 min and allow to cool before testing.



IHC staining of FFPE mouse lung tissue with PARP3 antibody. HIER: boil tissue sections in pH8 EDTA for 20 min and allow to cool before testing.



Western blot testing of 1) monkey COS-7 and 2) mouse kidney tissue lysate with PARP3 antibody. Predicted molecular weight ~60 kDa.

## Description

Poly [ADP-ribose] polymerase 3 is an enzyme that in humans is encoded by the PARP3 gene. The protein encoded by this gene belongs to the PARP family. These enzymes modify nuclear proteins by poly-ADP-ribosylation, which is required for DNA repair, regulation of apoptosis, and maintenance of genomic stability. This gene encodes the poly(ADP-ribosyl)transferase 3, which is preferentially localized to the daughter centriole throughout the cell cycle. Alternatively spliced transcript variants encoding different isoforms have been identified.

## Application Notes

Optimal dilution of the PARP3 antibody should be determined by the researcher.

## Immunogen

An E.coli-derived human recombinant protein (amino acids Q162-Q498) was used as the immunogen for the PARP3 antibody.

## Storage

After reconstitution, the PARP3 antibody can be stored for up to one month at 4°C. For long-term, aliquot and store at -20°C. Avoid repeated freezing and thawing.

