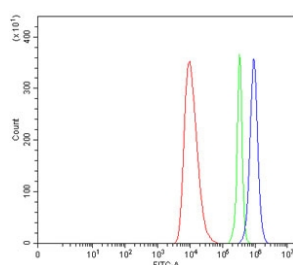


Parathyroid Hormone Receptor 1 Antibody / PTH1R (RQ7303)

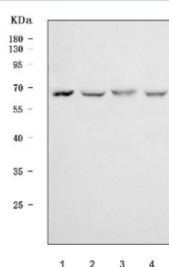
| Catalog No. | Formulation | Size |
|-------------|---|--------|
| RQ7303 | 0.5mg/ml if reconstituted with 0.2ml sterile DI water | 100 ug |

Bulk quote request

| | |
|---------------------------|--|
| Availability | 1-3 business days |
| Species Reactivity | Human, Monkey |
| Format | Antigen affinity purified |
| Clonality | Polyclonal (rabbit origin) |
| Isotype | Rabbit IgG |
| Purity | Antigen affinity purified |
| Buffer | Lyophilized from 1X PBS with 2% Trehalose |
| UniProt | Q03431 |
| Applications | Western Blot : 0.5-1ug/ml Flow Cytometry : 1-3ug/million cells Direct ELISA : 0.1-0.5ug/ml |
| Limitations | This Parathyroid Hormone Receptor 1 antibody is available for research use only. |



Flow cytometry testing of human HEL cells with Parathyroid Hormone Receptor 1 antibody at 1ug/million cells (blocked with goat sera); Red=cells alone, Green=isotype control, Blue= Parathyroid Hormone Receptor 1 antibody.



Western blot testing of 1) human 293T, 2) human HepG2, 3) human HUH-7 and 4) monkey COS-7 cell lysate with Parathyroid Hormone Receptor 1 antibody. Expected molecular weight ~66 kDa (unmodified), 85-95 kDa (glycosylated).

Description

Parathyroid hormone/parathyroid hormone-related peptide receptor, also known as PTH1R, PTHR, is a protein that in humans is encoded by the PTH1R gene. PTHR is a member of a family of G protein-coupled receptors. PTHR gene was mapped to the vicinity of the 3p21.3-p21.2 boundary by PCR analysis of human/rodent somatic cell hybrid panels using oligonucleotide primers designed to amplify a portion of the gene from genomic DNA. This is a receptor for parathyroid hormone and for parathyroid hormone-related peptide. The activity of this receptor is mediated by G proteins which activate adenylyl cyclase and also a phosphatidylinositol-calcium second messenger system. PTH1R functions as a receptor for parathyroid hormone and for parathyroid hormone-related protein.

Application Notes

Optimal dilution of the Parathyroid Hormone Receptor 1 antibody should be determined by the researcher.

Immunogen

Recombinant human protein (amino acids R102-L446) was used as the immunogen for the Parathyroid Hormone Receptor 1 antibody.

Storage

After reconstitution, the Parathyroid Hormone Receptor 1 antibody can be stored for up to one month at 4oC. For long-term, aliquot and store at -20oC. Avoid repeated freezing and thawing.