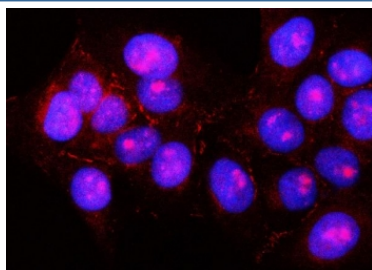


Pancreatic lipase-related protein 2 Antibody / PNLIPRP2 (RQ8076)

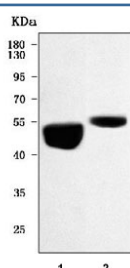
Catalog No.	Formulation	Size
RQ8076	0.5mg/ml if reconstituted with 0.2ml sterile DI water	100 ug

Bulk quote request

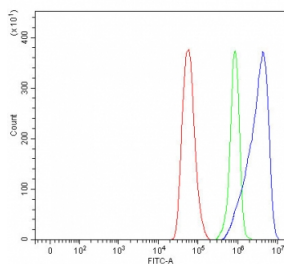
Availability	1-3 business days
Species Reactivity	Human, Mouse, Rat
Format	Antigen affinity purified
Clonality	Polyclonal (rabbit origin)
Isotype	Rabbit IgG
Purity	Antigen affinity purified
Buffer	Lyophilized from 1X PBS with 2% Trehalose
UniProt	P54317
Applications	Western Blot : 0.5-1ug/ml Immunofluorescence : 5ug/ml Flow Cytometry : 1-3gu/million cells Direct ELISA : 0.1-0.5ug/ml
Limitations	This Pancreatic lipase-related protein 2 antibody is available for research use only.



Immunofluorescent staining of FFPE human U-2 OS cells with Pancreatic lipase-related protein 2 antibody (red) and DAPI nuclear stain (blue). HIER: steam section in pH6 citrate buffer for 20 min.



Western blot testing of 1) rat pancreas and 2) mouse pancreas tissue lysate with Pancreatic lipase-related protein 2 antibody. Predicted molecular weight ~52 kDa.



Flow cytometry testing of fixed and permeabilized human HeLa cells with Pancreatic lipase-related protein 2 antibody at 1ug/million cells (blocked with goat sera); Red=cells alone, Green=isotype control, Blue= Pancreatic lipase-related protein 2 antibody.

Description

PNLIPRP2 encodes Pancreatic lipase-related protein 2, a lipase that hydrolyzes galactolipids, the main components of plant membrane lipids. An allelic polymorphism in this gene results in both coding and non-coding variants; the reference genome represents the non-coding allele.

Application Notes

Optimal dilution of the Pancreatic lipase-related protein 2 antibody should be determined by the researcher.

Immunogen

E. coli-derived recombinant human protein (amino acids D30-C469) was used as the immunogen for the Pancreatic lipase-related protein 2 antibody.

Storage

After reconstitution, the Pancreatic lipase-related protein 2 antibody can be stored for up to one month at 4oC. For long-term, aliquot and store at -20oC. Avoid repeated freezing and thawing.