

Pan Cytokeratin Antibody Cocktail PE Conjugate [clone AE1 + AE3] (V2330PE)

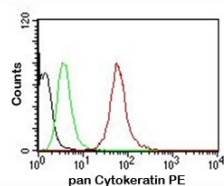
Catalog No.	Formulation	Size
V2330PE-100T	500 ul at 0.1 mg/ml with 0.1 mg/ml BSA (US sourced), 0.05% sodium azide	100 Tests



Citations (13)

[Bulk quote request](#)

Availability	1-3 business days
Species Reactivity	Human, Mouse, Rat
Format	PE Conjugate
Clonality	Monoclonal (mouse origin)
Isotype	Mouse IgG1, kappa
Clone Name	AE1 + AE3
Purity	Protein G affinity chromatography
Buffer	1X PBS, pH 7.4
Gene ID	3848 (K1); 3850 (K3); 3851 (K4); 3852 (K5); 3853 (K6A); 3856 (K8); 3858 (K10); 3861 (K14); 3866 (K15); 3868 (K16); 3880 (K19)
Localization	Cytoplasmic
Applications	Flow Cytometry : 5ul/test/million cells or 5ul/test/100ul of whole blood Immunofluorescence : 1:50-1:100 for 30 minutes at RT (1)
Limitations	This pan Cytokeratin antibody AE1 + AE3 is available for research use only.



FACS testing of MCF-7 cells: Black=cells alone; Green=isotype control; Red= pan Cytokeratin antibody

Description

Twenty human keratins are resolved with two-dimensional gel electrophoresis into acidic (pI 6.0) subfamilies. This pan keratin antibody cocktail recognizes acidic (Type I or LMW) and basic (Type II or HMW) cytokeratins, which include CK1,

CK3-6, CK8, CK10, CK14-16, and CK19. Many studies have shown the usefulness of cytokeratin markers in cancer research and tumor diagnosis. The AE1 + AE3 antibody cocktail is a broad spectrum pan cytokeratin antibody cocktail which differentiates epithelial tumors from non-epithelial tumors e.g. squamous vs. adenocarcinoma of the lung, liver carcinoma, breast cancer, and esophageal cancer. It has been used to characterize the source of various neoplasms and to study the distribution of cytokeratin containing cells in epithelia during normal development and during the development of epithelial neoplasms. It stains cytokeratin present in normal and abnormal human tissues and has shown high sensitivity in the recognition of epithelial cells and carcinomas.

Application Notes

The concentration stated for each application is a general starting point. Variations in protocols, secondaries and substrates may require the pan Cytokeratin antibody AE1 + AE3 to be titrated up or down for optimal performance.

Immunogen

Human epidermal keratin was used as the immunogen for this pan Cytokeratin antibody.

Storage

Store the pan Cytokeratin antibody at 2-8°C. Conjugate is light sensitive, store in the dark.

Alternate Names

KRT, Keratin, pan Cytokeratin antibody

References (2)