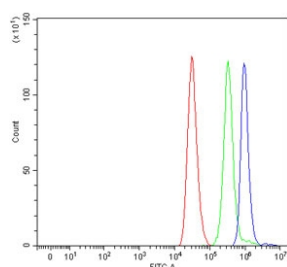


## PALB2 Antibody / FANCN (RQ7019)

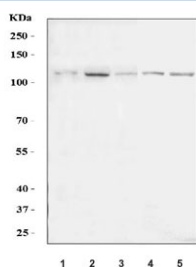
Catalog No.	Formulation	Size
RQ7019	0.5mg/ml if reconstituted with 0.2ml sterile DI water	100 ug

**Bulk quote request**

<b>Availability</b>	1-3 business days
<b>Species Reactivity</b>	Human, Mouse, Rat
<b>Format</b>	Antigen affinity purified
<b>Clonality</b>	Polyclonal (rabbit origin)
<b>Isotype</b>	Rabbit IgG
<b>Purity</b>	Antigen affinity purified
<b>Buffer</b>	Lyophilized from 1X PBS with 2% Trehalose
<b>UniProt</b>	Q86YC2
<b>Applications</b>	Western Blot : 0.5-1 ug/ml Flow Cytometry : 1-3ug/million cells Direct ELISA : 0.1-0.5ug/ml
<b>Limitations</b>	This PALB2 antibody is available for research use only.



Flow cytometry testing of human ThP-1 cells with PALB2 antibody at 1ug/million cells (blocked with goat sera); Red=cells alone, Green=isotype control, Blue= PALB2 antibody.



Western blot testing of 1) human HeLa, 2) human HepG2, 3) human MOLT-4, 4) rat liver and 5) mouse liver tissue lysate with PALB2 antibody. Predicted molecular weight ~131 kDa.

## Description

Partner and localizer of BRCA2, also known as PALB2 or FANCN, is a protein which in humans is encoded by the PALB2 gene. This gene encodes a protein that may function in tumor suppression. This protein binds to and colocalizes with the breast cancer 2 early onset protein (BRCA2) in nuclear foci and likely permits the stable intranuclear localization and accumulation of BRCA2.

## Application Notes

Optimal dilution of the PALB2 antibody should be determined by the researcher.

## Immunogen

Recombinant human protein (amino acids K45-S1186) was used as the immunogen for the PALB2 antibody.

## Storage

After reconstitution, the PALB2 antibody can be stored for up to one month at 4°C. For long-term, aliquot and store at -20°C. Avoid repeated freezing and thawing.