

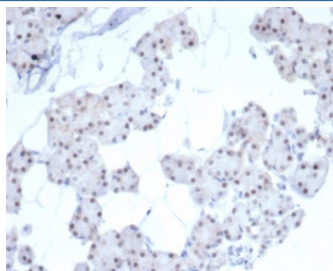
Paired-like homeobox 2B Antibody / PHOX2B [clone PHOX2B/7792R] (V5032)

Catalog No.	Formulation	Size
V5032-100UG	0.2 mg/ml in 1X PBS with 0.1 mg/ml BSA (US sourced), 0.05% sodium azide	100 ug
V5032-20UG	0.2 mg/ml in 1X PBS with 0.1 mg/ml BSA (US sourced), 0.05% sodium azide	20 ug
V5032SAF-100UG	1 mg/ml in 1X PBS; BSA free, sodium azide free	100 ug

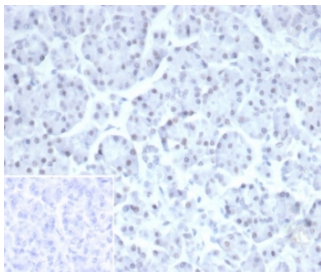
Recombinant **RABBIT MONOCLONAL**

[Bulk quote request](#)

Availability	1-3 business days
Species Reactivity	Human
Format	Purified
Clonality	Recombinant Rabbit Monoclonal
Isotype	Rabbit IgG, kappa
Clone Name	PHOX2B/7792R
Purity	Protein A/G affinity
UniProt	Q99453
Localization	Nucleus
Applications	Immunohistochemistry (FFPE) : 1-2ug/ml for 30 min at RT
Limitations	This Paired-like homeobox 2B antibody is available for research use only.



IHC staining of FFPE human renal cell carcinoma tissue with Paired-like homeobox 2B antibody (clone PHOX2B/7792R). HIER: boil tissue sections in pH 9 10mM Tris with 1mM EDTA for 20 min and allow to cool before testing.



IHC staining of FFPE human pancreas tissue with Paired-like homeobox 2B antibody (clone PHOX2B/7792R). Inset: PBS used in place of primary Ab (secondary Ab negative control). HIER: boil tissue sections in pH 9 10mM Tris with 1mM EDTA for 20 min and allow to cool before testing.

Description

Paired homeobox protein 2B (PHOX2B) is a transcription factor located on chromosome 4p13, which is essential for the formation of autonomic ganglia in the autonomic nervous system. PHOX2B is expressed in neuroblastoma, brain and adrenal glands. PHOX2B deficiency can lead to susceptibility to congenital central hypoventilation syndrome (CCHS) and neuroblastoma type 2 (NBLST2).

Application Notes

Optimal dilution of the Paired-like homeobox 2B antibody should be determined by the researcher.

Immunogen

A recombinant fragment of human protein was used as the immunogen for the Paired-like homeobox 2B antibody.

Storage

Aliquot the Paired-like homeobox 2B antibody and store frozen at -20oC or colder. Avoid repeated freeze-thaw cycles.