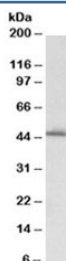


PAI-1 Antibody (R34088)

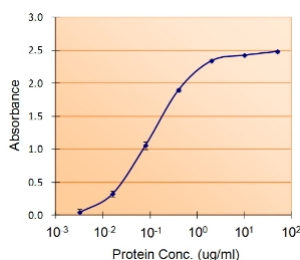
Catalog No.	Formulation	Size
R34088-100UG	0.5 mg/ml in 1X TBS, pH7.3, with 0.5% BSA (US sourced) and 0.02% sodium azide	100 ug

[Bulk quote request](#)

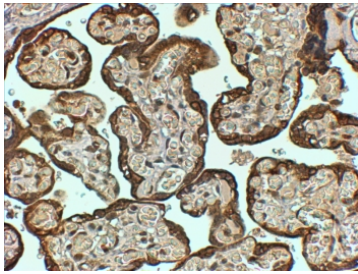
Availability	1-3 business days
Species Reactivity	Human
Predicted Reactivity	Dog
Format	Antigen affinity purified
Clonality	Polyclonal (goat origin)
Isotype	Goat Ig
Purity	Antigen affinity
Gene ID	5054
Applications	Western Blot : 0.3-1ug/ml Immunohistochemistry (FFPE) : 4-6ug/ml Enzyme ImmunoAssay : binds recombinant protein (use at 1.5-3ug/ml) ELISA (peptide) LOD : 1:64000
Limitations	This PAI-1 antibody is available for research use only.



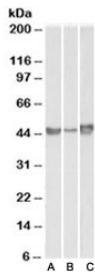
Western blot testing of human liver lysate with PAI-1 antibody at 0.3ug/ml. Predicted molecular weight ~45kDa.



Sandwich ELISA using the PAI-1 antibody at 1.5ug/ml as the detect.



IHC staining of FFPE human placenta at 4ug/ml. HIER: steamed with pH9 Tris/EDTA buffer, HRP-staining.



Western blot of A549 (A), HepG2 (B) and HeLa (C) lysates with PAI-1 antibody at 0.1ug/ml. Predicted molecular weight ~45kDa.

Description

Additional name(s) for this target protein: Plasminogen activator inhibitor, type I; SERPINE1

Application Notes

Optimal dilution of the PAI-1 antibody should be determined by the researcher.

Immunogen

Amino acids GFKIDDKGMAPALRH were used as the immunogen for this PAI-1 antibody.

Storage

Aliquot and store the PAI-1 antibody at -20oC.