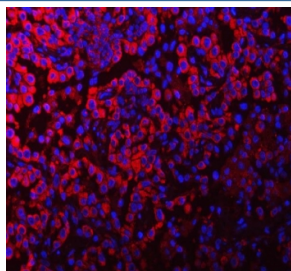


PACSIN2 Antibody (RQ7926)

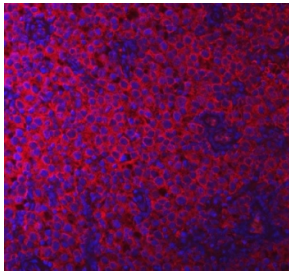
Catalog No.	Formulation	Size
RQ7926	0.5mg/ml if reconstituted with 0.2ml sterile DI water	100 ug

Bulk quote request

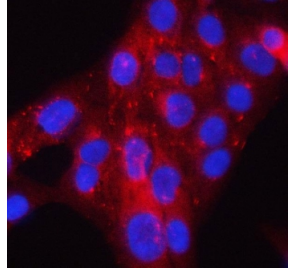
Availability	1-3 business days
Species Reactivity	Human, Mouse, Rat, Monkey
Format	Antigen affinity purified
Clonality	Polyclonal (rabbit origin)
Isotype	Rabbit IgG
Purity	Antigen affinity purified
Buffer	Lyophilized from 1X PBS with 2% Trehalose
UniProt	Q9UNF0
Localization	Cytoplasmic
Applications	Western Blot : 0.5-1ug/ml Immunohistochemistry (FFPE) : 2-5ug/ml Immunofluorescence (FFPE) : 5ug/ml Flow Cytometry : 1-3ug/million cells Direct ELISA : 0.1-0.5ug/ml
Limitations	This PACSIN2 antibody is available for research use only.



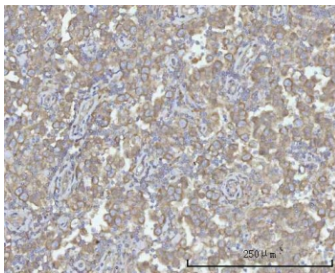
Immunofluorescent staining of FFPE human lung cancer tissue with PACSIN2 antibody (red) and DAPI nuclear stain (blue). HIER: steam section in pH8 EDTA buffer for 20 min.



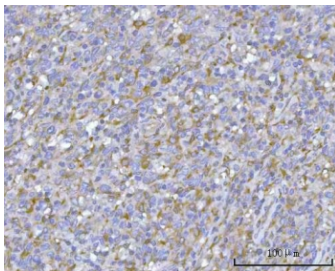
Immunofluorescent staining of FFPE human testicular cancer tissue with PACSIN2 antibody (red) and DAPI nuclear stain (blue). HIER: steam section in pH8 EDTA buffer for 20 min.



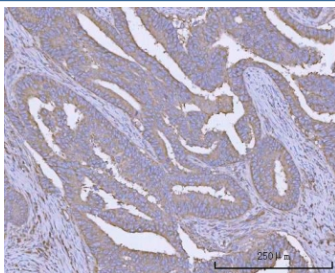
Immunofluorescent staining of FFPE human U-2 OS cells with PACSIN2 antibody (red) and DAPI nuclear stain (blue). HIER: steam section in pH6 citrate buffer for 20 min.



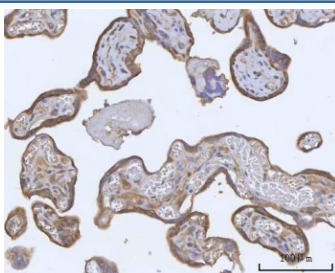
IHC staining of FFPE human testicular seminoma tissue with PACSIN2 antibody. HIER: boil tissue sections in pH8 EDTA for 20 min and allow to cool before testing.



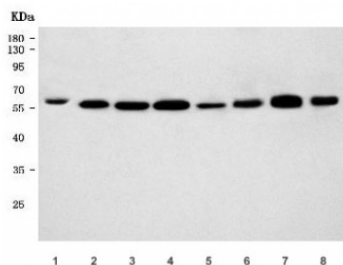
IHC staining of FFPE human intestine diffuse large B-cell lymphoma tissue with PACSIN2 antibody. HIER: boil tissue sections in pH8 EDTA for 20 min and allow to cool before testing.



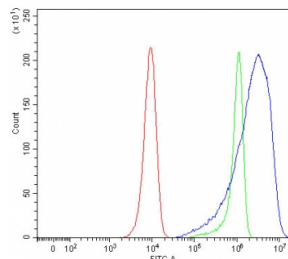
IHC staining of FFPE human colon adenocarcinoma tissue with PACSIN2 antibody. HIER: boil tissue sections in pH8 EDTA for 20 min and allow to cool before testing.



IHC staining of FFPE human placental tissue with PACSIN2 antibody. HIER: boil tissue sections in pH8 EDTA for 20 min and allow to cool before testing.



Western blot testing of 1) human T-47D, 2) monkey COS-7, 3) human placenta, 4) human HepG2, 5) rat lung, 6) rat heart, 7) mouse lung and 8) mouse heart tissue lysate with PACSIN2 antibody. Predicted molecular weight ~56 kDa.



Flow cytometry testing of human HeLa cells with PACSIN2 antibody at 1ug/million cells (blocked with goat sera); Red=cells alone, Green=isotype control, Blue= PACSIN2 antibody.

Description

Protein kinase C and casein kinase substrate in neurons protein 2 (Pacsin 2) is a protein that in humans is encoded by the PACSIN2 gene. This gene is a member of the protein kinase C and casein kinase substrate in neurons family. The encoded protein is involved in linking the actin cytoskeleton with vesicle formation by regulating tubulin polymerization. Alternative splicing results in multiple transcript variants.

Application Notes

Optimal dilution of the PACSIN2 antibody should be determined by the researcher.

Immunogen

E. coli-derived recombinant human protein (amino acids M84-D397) was used as the immunogen for the PACSIN2 antibody.

Storage

After reconstitution, the PACSIN2 antibody can be stored for up to one month at 4oC. For long-term, aliquot and store at -20oC. Avoid repeated freezing and thawing.