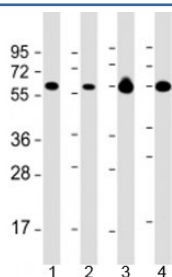


PACSIN2 Antibody [clone 1735CT116.76.60] (F53980)

Catalog No.	Formulation	Size
F53980-0.2ML	In 1X PBS, pH 7.4, with 0.09% sodium azide	0.2 ml
F53980-0.05ML	In 1X PBS, pH 7.4, with 0.09% sodium azide	0.05 ml

[Bulk quote request](#)

Availability	1-3 business days
Species Reactivity	Human, Mouse
Format	Purified
Clonality	Polyclonal (rabbit origin)
Isotype	Mouse IgG1, kappa
Clone Name	1735CT116.76.60
Purity	Protein G affinity chromatography
UniProt	Q9UNF0
Localization	Cytoplasmic
Applications	Western Blot : 1:1000-1:2000
Limitations	This PACSIN2 antibody is available for research use only.



Western blot testing of 1) Daudi, 2) HL-60 cell lysate, 3) human brain and 4) mouse brain lysate with PACSIN2 antibody at 1:2000. Predicted molecular weight: 56 kDa.

Description

Protein kinase C and casein kinase substrate in neurons protein 2 is a lipid-binding protein that is able to promote the tubulation of the phosphatidic acid-containing membranes it preferentially binds. Plays a role in intracellular vesicle-mediated transport. Involved in the endocytosis of cell-surface receptors like the EGF receptor, contributing to its internalization in the absence of EGF stimulus. May also play a role in the formation of caveolae at the cell membrane. Recruits DNM2 to caveolae, and thereby plays a role in caveola-mediated endocytosis.

Application Notes

Titration of the PACSIN2 antibody may be required due to differences in protocols and secondary/substrate sensitivity.

Immunogen

A partial recombinant protein corresponding to amino acids 250-486 from the human protein was used as the immunogen for the PACSIN2 antibody.

Storage

Aliquot the PACSIN2 antibody and store frozen at -20oC or colder. Avoid repeated freeze-thaw cycles.