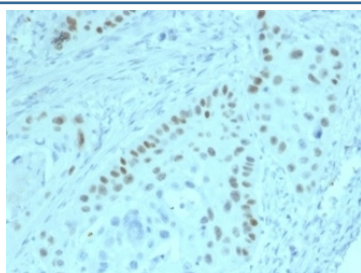


## p63 Antibody / Tumor protein 63 [clone PCRP-TP63-2G3] (V9376)

Catalog No.	Formulation	Size
V9376-100UG	0.2 mg/ml in 1X PBS with 0.1 mg/ml BSA (US sourced), 0.05% sodium azide	100 ug
V9376-20UG	0.2 mg/ml in 1X PBS with 0.1 mg/ml BSA (US sourced), 0.05% sodium azide	20 ug
V9376SAF-100UG	1 mg/ml in 1X PBS; BSA free, sodium azide free	100 ug

[Bulk quote request](#)

<b>Availability</b>	1-3 business days
<b>Species Reactivity</b>	Human
<b>Format</b>	Purified
<b>Clonality</b>	Monoclonal (mouse origin)
<b>Isotype</b>	Mouse IgG
<b>Clone Name</b>	PCRP-TP63-2G3
<b>Purity</b>	Protein A/G affinity
<b>UniProt</b>	Q9H3D4
<b>Localization</b>	Nucleus, Cytoplasm
<b>Applications</b>	Flow Cytometry : 1-2ug/million cells Immunofluorescence : 1-2ug/ml Immunohistochemistry (FFPE) : 1-2ug/ml
<b>Limitations</b>	This p63 antibody is available for research use only.



IHC staining of FFPE human prostate tissue with p63 antibody (clone PCRP-TP63-2G3).  
HIER: boil tissue sections in pH 9 10mM Tris with 1mM EDTA for 20 min and allow to cool before testing.

## Description

p63 is a homolog of the tumor suppressor p53. It is identified in basal cells in the epithelial layers of a variety of tissues, including epidermis, cervix, urothelium, breast and prostate. p63 was detected in nuclei of the basal epithelium in normal

prostate glands; however, it was not expressed in malignant tumors of the prostate. As a result, p63 has been reported as a useful marker for differentiating benign from malignant lesions in the prostate, particularly when used in combination with markers of high molecular weight cytokeratins and the prostate-specific marker AMACR (P504S). p63 has also been shown to be a sensitive marker for lung squamous cell carcinomas (SqCC), with a sensitivity of ~90%. Specificity for lung SqCC, vs. lung adenocarcinoma (LADC), is approximately 80%. In breast tissue, p63 has been identified in myoepithelial cells of normal ducts.

## **Application Notes**

Optimal dilution of the p63 antibody should be determined by the researcher.

## **Immunogen**

Recombinant full-length human TP63 protein was used as the immunogen for the p63 antibody.

## **Storage**

Aliquot the p63 antibody and store frozen at -20oC or colder. Avoid repeated freeze-thaw cycles.