

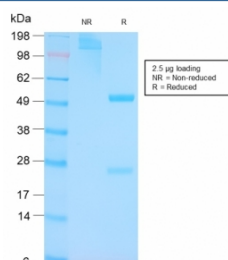
## p53 Tumor Suppressor Protein Antibody [clone TP53/3156R] (V5424)

Catalog No.	Formulation	Size
V5424-100UG	0.2 mg/ml in 1X PBS with 0.1 mg/ml BSA (US sourced), 0.05% sodium azide	100 ug
V5424-20UG	0.2 mg/ml in 1X PBS with 0.1 mg/ml BSA (US sourced), 0.05% sodium azide	20 ug
V5424SAF-100UG	1 mg/ml in 1X PBS; BSA free, sodium azide free	100 ug

Recombinant **RABBIT MONOCLONAL**

[Bulk quote request](#)

<b>Availability</b>	1-3 business days
<b>Species Reactivity</b>	Human
<b>Format</b>	Purified
<b>Clonality</b>	Recombinant Rabbit Monoclonal
<b>Isotype</b>	Rabbit IgG, kappa
<b>Clone Name</b>	TP53/3156R
<b>Purity</b>	Protein A/G affinity
<b>UniProt</b>	P04637
<b>Localization</b>	Cytoplasm, Nucleus
<b>Applications</b>	ELISA :
<b>Limitations</b>	This p53 Tumor Suppressor Protein antibody is available for research use only.



SDS-PAGE analysis of purified, BSA-free p53 antibody (clone TP53/3156R) as confirmation of integrity and purity.

## Description

p53 binds to a DNA consensus sequence, the p53 response element, and it regulates normal cell growth cycle events by activating transcription of genes, involved either in progression through the cycle, or causing arrest in G1 when the genome is damaged. In most transformed and tumor cells the concentration of p53 is increased 51000 fold over the minute concentrations (1000 molecules cell) in normal cells, principally due to the increased half-life (4 h) compared to

that of the wild-type (20 min). p53 Localizes in the nucleus, but is detectable at the plasma membrane during mitosis and when certain mutations modulate cytoplasmic/nuclear distribution. p53 Is the most commonly mutated gene in spontaneously occurring human cancers. Mutations arise with an average frequency of 70% but incidence varies from zero in carcinoid lung tumors to 97% in primary melanomas. High concentrations of p53 protein are transiently expressed in human epidermis and superficial dermal fibroblasts following mild ultraviolet irradiation.

## **Application Notes**

Optimal dilution of the p53 Tumor Suppressor Protein antibody should be determined by the researcher.

## **Immunogen**

SV40-transformed mouse B4 cells were used as the immunogen for the p53 Tumor Suppressor Protein antibody.

## **Storage**

Aliquot the p53 Tumor Suppressor Protein antibody and store frozen at -20oC or colder. Avoid repeated freeze-thaw cycles.