

p504S Antibody / AMACR [clone 13H4] (V2505S)

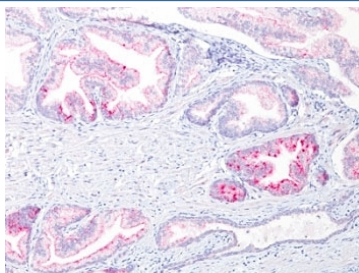
Catalog No.	Formulation	Size
V2505S-0.5ML	Bioreactor concentrate with 0.05% sodium azide	0.5 ml
V2505S-0.1ML	Bioreactor concentrate with 0.05% sodium azide	0.1 ml
V2505IHC-7ML	Prediluted in 1X PBS, 0.05% sodium azide; *For IHC use only*	7 ml



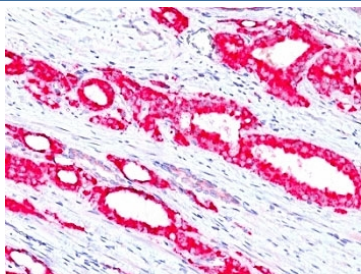
Citations (8)

[Bulk quote request](#)

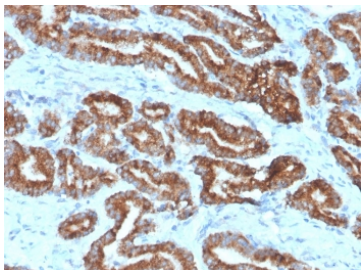
Availability	1-3 business days
Species Reactivity	Human
Format	Bioreactor concentrate
Clonality	Rabbit Monoclonal
Isotype	Rabbit IgG
Clone Name	13H4
Purity	Unpurified high titer supernatant
UniProt	Q9UHK6
Localization	Cytoplasmic
Applications	Immunohistochemistry (FFPE) : 1:50-1:100 for 30-60 min at RT Western Blot : 1:50-1:100
Limitations	This p504S antibody is available for research use only.



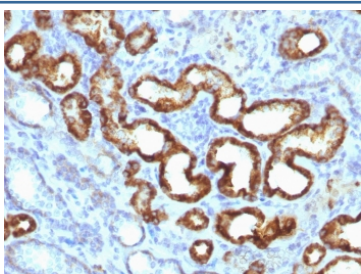
Formalin-fixed, paraffin-embedded human prostate carcinoma stained with p504S antibody (13H4)



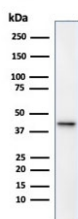
Formalin-fixed, paraffin-embedded human prostate carcinoma stained with p504S antibody (13H4)



IHC staining of FFPE human prostate carcinoma with p504S antibody (clone 13H4).
HIER: boil tissue sections in pH 9 10mM Tris with 1mM EDTA for 20 min and allow to cool before testing.



IHC staining of FFPE human renal cell carcinoma with p504S antibody (clone 13H4).
HIER: boil tissue sections in pH 9 10mM Tris with 1mM EDTA for 20 min and allow to cool before testing.



Western blot testing of human kidney lysate with p504S antibody. Predicted molecular weight ~43 kDa.

Description

This antibody recognizes a protein of 44kDa, which is identified as AMACR, also known as p504S. It is an enzyme that is involved in bile acid biosynthesis and beta-oxidation of branched-chain fatty acids. AMACR is essential in lipid metabolism. It is expressed in cells of premalignant high-grade prostatic intraepithelial neoplasia (HGPIN) and prostate adenocarcinoma. The majority of the carcinoma cells show a distinct granular cytoplasmic staining reaction. AMACR is present at low or undetectable levels in glandular epithelial cells of normal prostate and benign prostatic hyperplasia. A spotty granular cytoplasmic staining is seen in a few cells of the benign glands. AMACR is expressed in normal liver (hepatocytes), kidney (tubular epithelial cells) and gall bladder (epithelial cells). Expression has also been found in lung (bronchial epithelial cells) and colon (colonic surface epithelium). AMACR expression can also be found in hepatocellular carcinoma and kidney carcinoma. Past studies have also shown that AMACR is expressed in various colon carcinomas (well, moderately and poorly differentiated) and over expressed in prostate carcinoma.

Application Notes

Optimal dilution of the p504S antibody should be determined by the researcher.

1. Staining of formalin-fixed tissues requires boiling tissue sections in 10mM Tris with 1mM EDTA, pH 9.0, for 10-20 min followed by cooling at RT for 20 min

2. The prediluted format is supplied in a dropper bottle and is optimized for use in IHC. After epitope retrieval step (if required), drip mAb solution onto the tissue section and incubate at RT for 30 min.

Immunogen

Full length human recombinant protein was used as the immunogen for the p504S antibody.

Storage

Store the p504S antibody at 2-8oC (with azide) or aliquot and store at -20oC or colder (without azide).