

p27KIP1 Antibody (R31499)

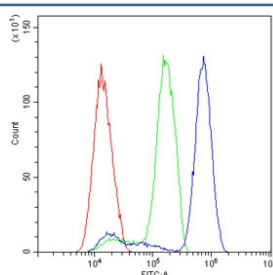
Catalog No.	Formulation	Size
R31499	0.5mg/ml if reconstituted with 0.2ml sterile DI water	100 ug

Bulk quote request

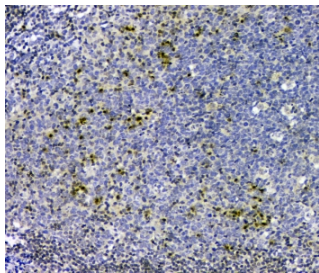
Availability	1-3 business days
Species Reactivity	Human, Rat
Format	Antigen affinity purified
Clonality	Polyclonal (rabbit origin)
Isotype	Rabbit IgG
Purity	Antigen affinity
Buffer	Lyophilized from 1X PBS with 2.5% BSA and 0.025% sodium azide
Gene ID	1027
Applications	Western Blot : 0.5-1ug/ml Immunohistochemistry (FFPE) : 1-2ug/ml Flow Cytometry : 1-3ug/10 ⁶ cells Immunocytochemistry (FFPE) : 2-4ug/ml
Limitations	This p27KIP1 antibody is available for research use only.



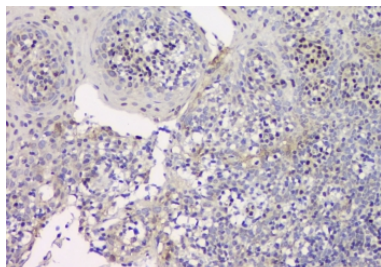
Western blot testing of p27KIP1 antibody and Lane 1: rat thymus; 2: rat brain lysate. Expected/observed molecular weight ~27 kDa.



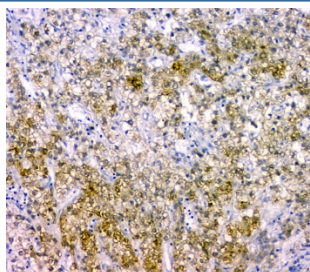
Flow cytometry testing of human SiHa cells with p27KIP1 antibody at 1ug/10⁶ cells (blocked with goat sera); Red=cells alone, Green=isotype control, Blue= p27KIP1 antibody.



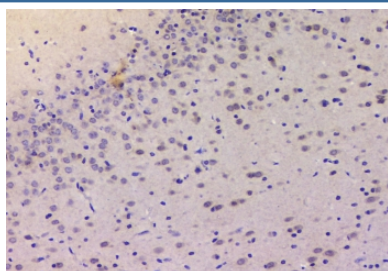
IHC staining of FFPE human tonsil with p27KIP1 antibody at 1ug/ml. HIER: boil tissue sections in pH6, 10mM citrate buffer, for 10-20 min and allow to cool before testing.



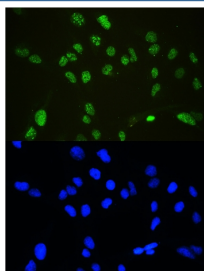
IHC staining of FFPE human tonsil with p27KIP1 antibody at 1ug/ml. HIER: boil tissue sections in pH6, 10mM citrate buffer, for 10-20 min and allow to cool before testing.



IHC staining of FFPE human liver cancer with p27KIP1 antibody at 1ug/ml. HIER: boil tissue sections in pH6, 10mM citrate buffer, for 10-20 min and allow to cool before testing.



IHC staining of FFPE rat brain with p27KIP1 antibody at 1ug/ml. HIER: boil tissue sections in pH6, 10mM citrate buffer, for 10-20 min and allow to cool before testing.



ICC staining of FFPE human U-2 OS cells with p27KIP1 antibody (green) at 2ug/ml and DAPI nuclear stain (blue). HIER: steam section in pH6 citrate buffer for 20 min.

Description

Cyclin-dependent kinase inhibitor 1B, also known as KIP1 or P27, is an enzyme inhibitor that in humans is encoded by the CDKN1B gene. It encodes a protein which belongs to the Cip/Kip family of cyclin dependent kinase (Cdk) inhibitor proteins. p27KIP1 can inhibit both CDK activation and the kinase activity of assembled and activated cyclin-CDK. The function of the protein is associated with an aggressive phenotype in human breast cancer. Downregulation of p27KIP1 by CK2-alpha-prime is necessary for development of agonist- and stress-induced cardiac hypertrophy.

Application Notes

The stated application concentrations are suggested starting amounts. Titration of the p27KIP1 antibody may be required due to differences in protocols and secondary/substrate sensitivity.

Immunogen

Human partial recombinant protein (AA 10-198) was used as the immunogen for this p27KIP1 antibody.

Storage

After reconstitution, the p27KIP1 antibody can be stored for up to one month at 4°C. For long-term, aliquot and store at -20°C. Avoid repeated freezing and thawing.