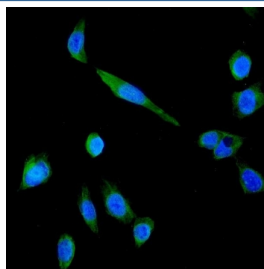


## P Glycoprotein Antibody (RQ4527)

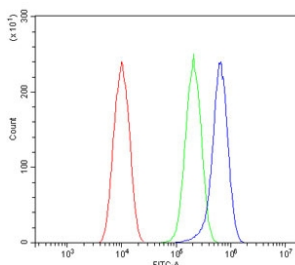
Catalog No.	Formulation	Size
RQ4527	0.5mg/ml if reconstituted with 0.2ml sterile DI water	100 ug

**Bulk quote request**

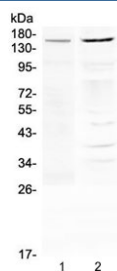
<b>Availability</b>	1-3 business days
<b>Species Reactivity</b>	Human
<b>Format</b>	Purified
<b>Clonality</b>	Polyclonal (rabbit origin)
<b>Isotype</b>	Rabbit IgG
<b>Purity</b>	Protein A affinity
<b>Buffer</b>	Lyophilized from 1X PBS with 2% Trehalose and 0.025% sodium azide
<b>UniProt</b>	P08183
<b>Localization</b>	Cell membrane
<b>Applications</b>	Western Blot : 0.5-1ug/ml Immunofluorescence (FFPE) : 2-4ug/ml Flow Cytometry : 1-3ug/million cells
<b>Limitations</b>	This P Glycoprotein antibody is available for research use only.



Immunofluorescent staining of FFPE human U-2 OS cells with P Glycoprotein antibody (green) and DAPI nuclear stain (blue). HIER: steam section in pH6 citrate buffer for 20 min.



Flow cytometry testing of human U-2 OS cells with P Glycoprotein antibody at 1ug/million cells (blocked with goat sera); Red=cells alone, Green=isotype control, Blue= P Glycoprotein antibody.



Western blot testing of human 1) THP-1 and 2) A375 cell lysate with P Glycoprotein antibody at 0.5ug/ml. Expected molecular weight: 141-180 kDa depending on glycosylation level.

## Description

P-GP, also called ABCB1 or PGY1, is a glycoprotein that in humans is encoded by the ABCB1 gene. It is mapped to 7q21.12. P-GP is a well-characterized ABC-transporter (which transports a wide variety of substrates across extra- and intracellular membranes) of the MDR/TAP subfamily. It is an important protein of the cell membrane that pumps many foreign substances out of cells. More formally, it is an ATP-dependent drug efflux pump with broad substrate specificity. P-GP is an ATP-dependent drug efflux pump for xenobiotic compounds with broad substrate specificity. It is responsible for decreased drug accumulation in multidrug-resistant cells and often mediates the development of resistance to anticancer drugs. This protein also functions as a transporter in the blood-brain barrier.

## Application Notes

Optimal dilution of the P Glycoprotein antibody should be determined by the researcher.

## Immunogen

Amino acids QAQDRKLSTKEALDESIPPVSFWRIMKLNLTWPY were used as the immunogen for the P Glycoprotein antibody.

## Storage

After reconstitution, the P Glycoprotein antibody can be stored for up to one month at 4°C. For long-term, aliquot and store at -20°C. Avoid repeated freezing and thawing.