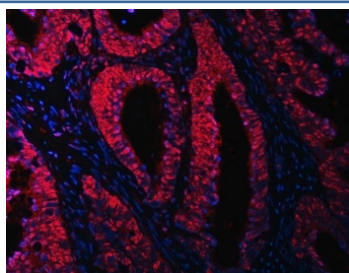


OTT3 Antibody / RBM15B (RQ7748)

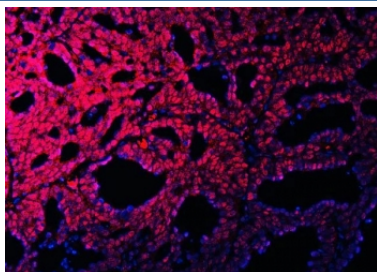
Catalog No.	Formulation	Size
RQ7748	0.5mg/ml if reconstituted with 0.2ml sterile DI water	100 ug

Bulk quote request

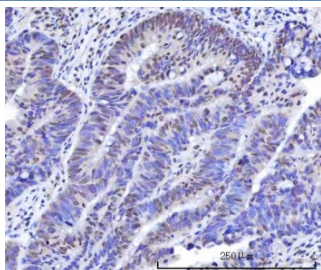
Availability	1-3 business days
Species Reactivity	Human, Rat
Format	Antigen affinity purified
Clonality	Polyclonal (rabbit origin)
Isotype	Rabbit IgG
Purity	Antigen affinity purified
Buffer	Lyophilized from 1X PBS with 2% Trehalose
UniProt	Q8NDT2
Localization	Nuclear
Applications	Western Blot : 0.5-1ug/ml Immunohistochemistry (FFPE) : 2-5ug/ml Flow Cytometry : 1-3ug/million cells Immunofluorescence : 5ug/ml Direct ELISA : 0.1-0.5ug/ml
Limitations	This OTT3 antibody is available for research use only.



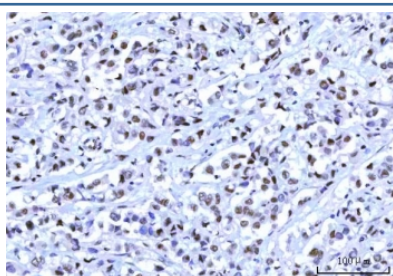
Immunofluorescent staining of FFPE human intestinal cancer with OTT3 antibody (red) and DAPI nuclear stain (blue). HIER: steam section in pH6 citrate buffer for 20 min.



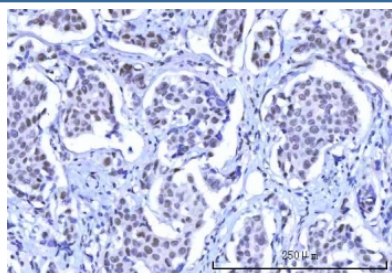
Immunofluorescent staining of FFPE human ovarian cancer with OTT3 antibody (red) and DAPI nuclear stain (blue). HIER: steam section in pH6 citrate buffer for 20 min.



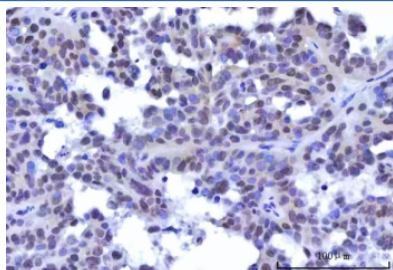
IHC staining of FFPE human rectum adenocarcinoma tissue with OTT3 antibody. HIER: boil tissue sections in pH8 EDTA for 20 min and allow to cool before testing.



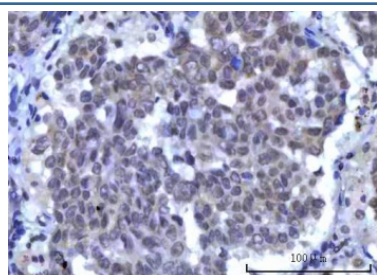
IHC staining of FFPE human breast cancer tissue with OTT3 antibody. HIER: boil tissue sections in pH8 EDTA for 20 min and allow to cool before testing.



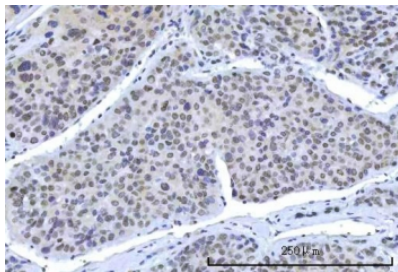
IHC staining of FFPE human esophageal squamous carcinoma tissue with OTT3 antibody. HIER: boil tissue sections in pH8 EDTA for 20 min and allow to cool before testing.



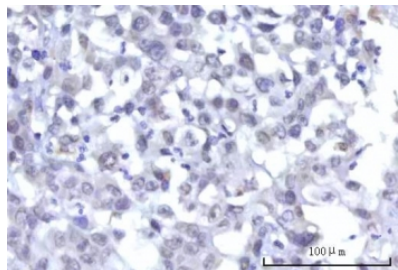
IHC staining of FFPE human ovary serous carcinoma tissue with OTT3 antibody. HIER: boil tissue sections in pH8 EDTA for 20 min and allow to cool before testing.



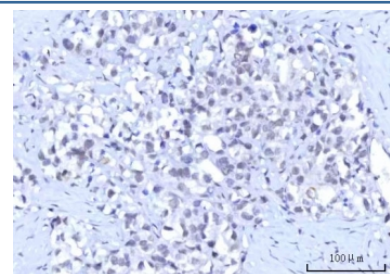
IHC staining of FFPE human lung squamous cell carcinoma tissue with OTT3 antibody. HIER: boil tissue sections in pH8 EDTA for 20 min and allow to cool before testing.



IHC staining of FFPE human liver cancer tissue with OTT3 antibody. HIER: boil tissue sections in pH8 EDTA for 20 min and allow to cool before testing.



IHC staining of FFPE human undifferentiated carcinoma of the pancreas tissue with OTT3 antibody. HIER: boil tissue sections in pH8 EDTA for 20 min and allow to cool before testing.



IHC staining of FFPE human gastric adenocarcinoma tissue with OTT3 antibody. HIER: boil tissue sections in pH8 EDTA for 20 min and allow to cool before testing.

Description

Members of the SPEN (Split-end) family of proteins, including RBM15B, have repressor function in several signaling pathways and may bind to RNA through interaction with spliceosome component.

Application Notes

Optimal dilution of the OTT3 antibody should be determined by the researcher.

Immunogen

E. coli-derived recombinant human protein (amino acids K164-A890) was used as the immunogen for the OTT3 antibody.

Storage

After reconstitution, the OTT3 antibody can be stored for up to one month at 4°C. For long-term, aliquot and store at -20°C. Avoid repeated freezing and thawing.